



G. File
C: SKD, SI, BC, WT

March 31, 2010

The Honorable Chairman and Members of the
Hawaii Public Utilities Commission
Kekuanaoa Building, First Floor
465 South King Street
Honolulu, HI 96813

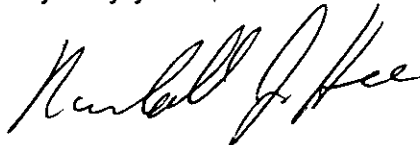
FILED
2010 MAR 31 A 10:01
PUBLIC UTILITIES
COMMISSION

Subject: KIUC 2009 Annual Service Reliability Report

Dear Ms. Kane:

Attached for the Commission's information is a copy of KIUC's 2009 Annual Service Reliability Report. If you have any questions regarding the attached report please contact Tim Blume at (808) 246-8274.

Very truly yours,



 Randall J. Hee, P.E.
President & Chief Executive Officer

Enclosures

cc: PUC Assistant Nate Kawakami
Catherine Awakuni, Consumer Advocate



ANNUAL SERVICE RELIABILITY REPORT

2009

Prepared
March 22, 2010

CONTENTS

Introduction.....	3
Definition of Terms.....	4
Reliability Indices.....	6
Sustained Interruption Causes.....	9
Interruption List.....	Attachment A

INTRODUCTION

This is the 2009 Annual Service Reliability Report ("Report") of the Kaua'i Island Utility Cooperative ("KIUC"). The Report contains a five-year history of standard industry reliability indices in order to depict the quality of electrical service provided to the cooperative consumer/member. These reliability indices are calculated using the data from all sustained (i.e. one minute or longer) system interruptions.

If data normalization is required, it is done using the guidelines specified in the report entitled, "Methodology for Determining Reliability Indices for HECO Utilities," dated December 1990. That report indicates that normalization is allowed for "abnormal" situations such as hurricane, tsunami, earthquake, flood, catastrophic equipment failure, and single outages that cascade into a loss of load greater than 10% of the system peak. Such normalizations are made because good engineering design – while accounting for safety, reliability, utility industry standards, and economics – cannot and should not always account for catastrophic events.

The Report also contains a detailed breakdown of interruption causes, which is used to determine steps to be taken to prevent recurrence of such interruptions.

DEFINITION OF TERMS

CUSTOMER INTERRUPTION

One interruption of one customer. Interruptions to customers at their request (e.g. customer maintenance) are not considered.

INTERRUPTION

The loss of service to one or more consumers and is a result of one or more component outages.

INTERRUPTION DURATION

The period from the initiation of an interruption to a consumer until service has been restored to that consumer.

MOMENTARY INTERRUPTION

An interruption that has duration limited to the period required to restore service by automatic or supervisory-controlled switching operations or by manual switching at locations where an operator is immediately available. Such switching operations must be completed in a specific time not to exceed one minute.

SUSTAINED INTERRUPTION

Any interruption not classified as a momentary interruption (i.e. greater than one minute in duration). Only this type of interruption is included in the reliability indices within this report.

RELIABILITY INDICES

Measurements used to indicate electrical service reliability. The indices used in this report conform to Institute of Electrical and Electronics Engineers (IEEE) standards. Four indices that convey a meaningful representation of the level of reliability were selected and are presented in this report. These reliability indices are as follows:

1. AVERAGE SERVICE AVAILABILITY (ASA)

Total customer hours actually served as a percentage of total customer hours possible during the year. This indicates the extent to which electrical service was available to all customers. This index has been commonly referred to as the "Index of Reliability."

2. CUSTOMER AVERAGE INTERRUPTION DURATION INDEX (CAIDI)

The interruption duration per customer interrupted during the year. This index indicates the average duration of an interruption for those customers affected by a sustained interruption.

3. SYSTEM AVERAGE INTERRUPTION DURATION INDEX (SAIDI)

The interruption duration per customer served during the year. This index indicates the average interruption time experienced by all customers serviced on the system.

4. SYSTEM AVERAGE INTERRUPTION FREQUENCY INDEX (SAIFI)

The number of customer interruptions per customer served during the year. This index indicates the average number of sustained interruptions experienced by all customers serviced on the system.

The reliability indices are related to each other in a few ways. For example, the product of CAIDI and SAIFI is SAIDI. SAIDI can then be used to find ASA, since SAIDI represents the time during a period without service, while ASA represents the percent of time during that same period with service. The reliability indices can be thought of more simply as:

1. The percent of time electrical service is available (ASA)
2. The amount of time electrical service is NOT available (SAIDI)
3. How long an interruption lasts (CAIDI)
4. How often an interruption occurs (SAIFI)

Table 1: 2005 – 2009 KIUC RELIABILITY INDICES

	2005	2006	2007	2008	2009
System Peak, MW	76.18	76.78	77.75	74.27	75.41
Customers, #	33,772	34,671	35,207	35,713	36,004
ASA, %	99.976	99.969	99.961	99.983	99.983
SAIFI, #	4.89	8.17	8.43	4.45	6.17
CAIDI, minutes	25.63	20.16	24.35	19.84	14.63
SAIDI, minutes	125.33	164.70	205.15	88.18	90.28

Notes:

None of the above data has been normalized.

Fig. 1: ASA (higher is better)

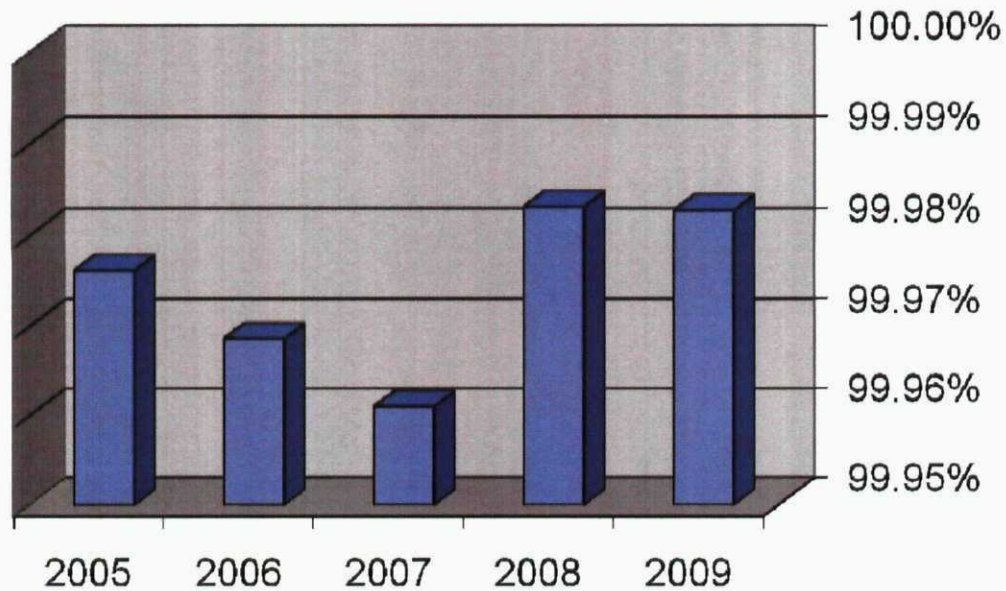


Figure 1 shows the Average System Availability (ASA) for the past five years. The 2009 and 2008 ASA of 99.983% were the best of the five-year period and better than the five-year average of 99.974%.

Fig. 2: SAIFI (lower is better)

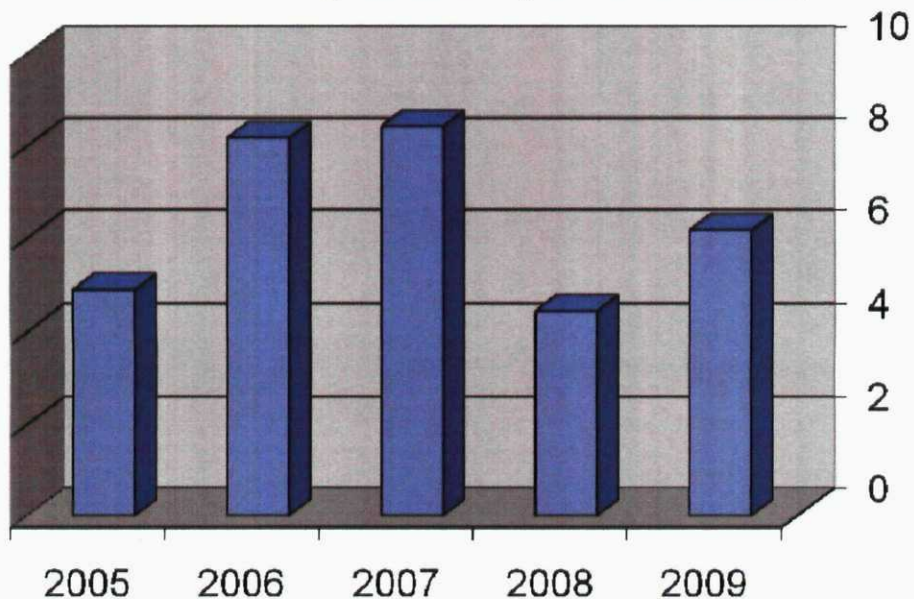


Figure 2 shows the System Average Interruption Frequency Index (SAIFI) for the past five years. The 2009 SAIFI of 6.17 was third best of the five-year period and better than the five-year average of 6.42.

Fig. 3: CAIDI (lower is better)

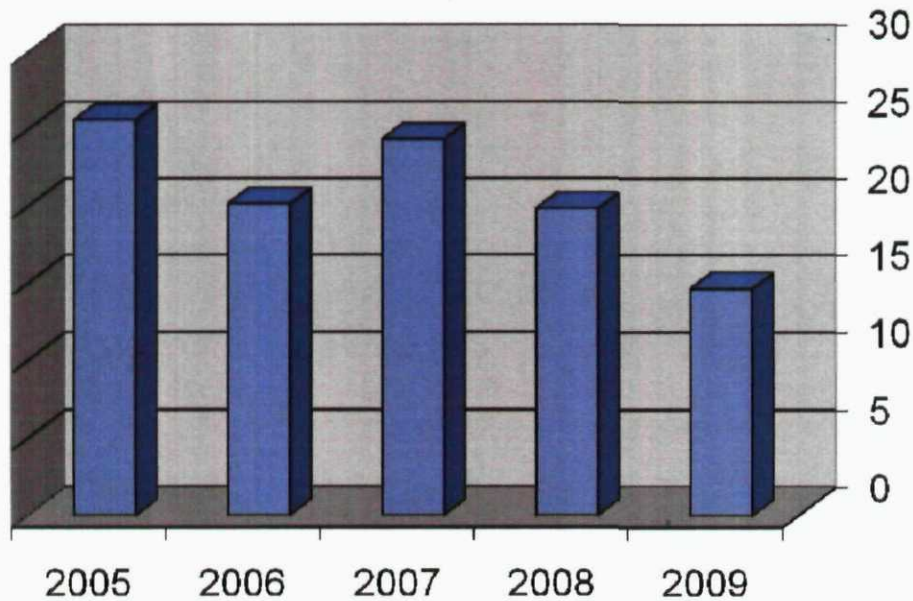


Figure 3 shows the Customer Average Interruption Duration Index (CAIDI) for the past five years. The 2009 CAIDI of 14.63 was best of the five-year period and better than the five-year average of 20.92.

Fig. 4: SAIDI (lower is better)

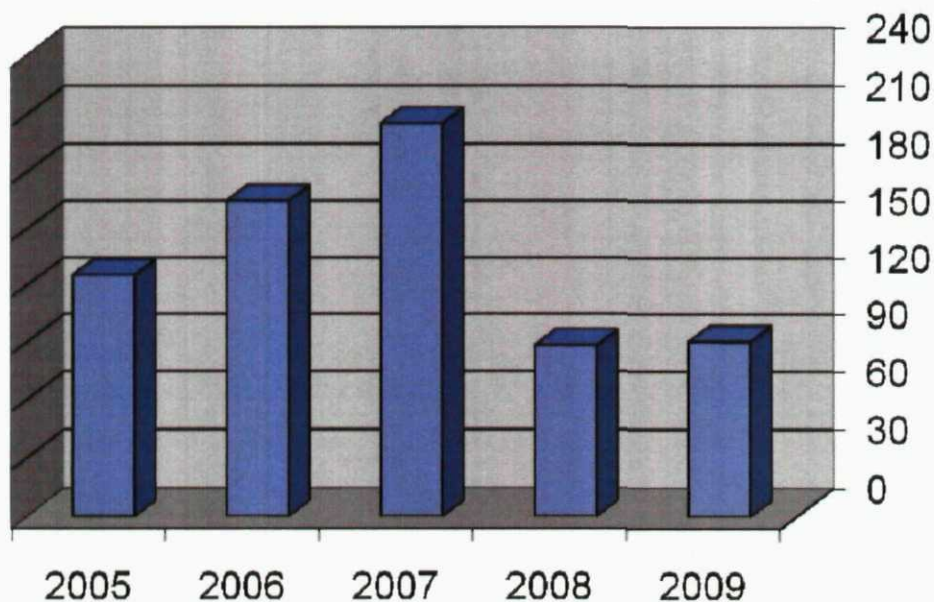


Figure 4 shows the System Average Interruption Duration Index (SAIDI) for the past five years. The 2009 SAIDI of 90.28 was second best of the five-year period and better than the five-year average of 134.73.

2009 KIUC SUSTAINED INTERRUPTION CAUSES

In the following figures and tables, the most recent year's sustained interruption causes are examined. Interruptions can be broken down many ways, but we will focus on two areas: causes by frequency (what caused the most interruptions), and causes by magnitude (what caused the most severe interruptions).

Fig. 5: Sustained Interruptions by Frequency

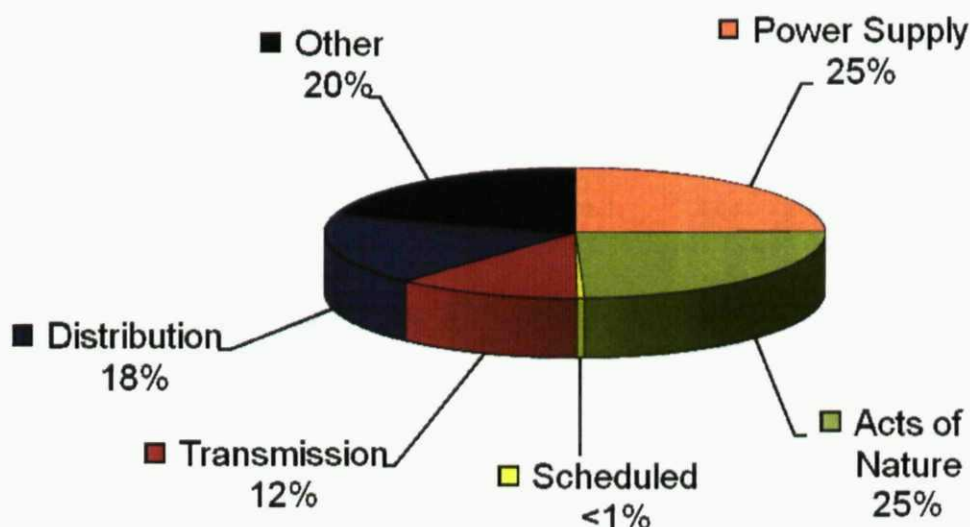


Figure 5 shows the breakdown by frequency. Loss of "Power Supply" confined within KIUC caused the most interruptions. An example of this is generating unit problems that result in a reduction of output, causing an under frequency load shed. A close second was "Acts of Nature" – high winds, floods, storms, etc. For KIUC, acts of nature typically involve high winds causing debris such as trees to contact or topple wires. Causing the third most interruptions was "Other" – persons or equipment not related to or owned by KIUC. Examples include auto accidents that contact utility poles or wires, non-KIUC contractors such as construction crews that dig into underground cables or tree trimmers that contact overhead wires, and trees that contact wires due to overgrowth. The fourth leading cause of interruptions was "Distribution" – failure or malfunction of distribution equipment including cables, fuses, insulators, poles, and transformers. The fifth leading cause of interruptions was "Transmission" – failure or malfunction of transmission equipment including insulators, large transformers, lightning arrestors, and switches. The sixth (or least) and final cause of interruptions was "Scheduled" – prearranged outages to conduct repairs to transmission or distribution circuits.

Fig. 6: Sustained Interruptions by Magnitude

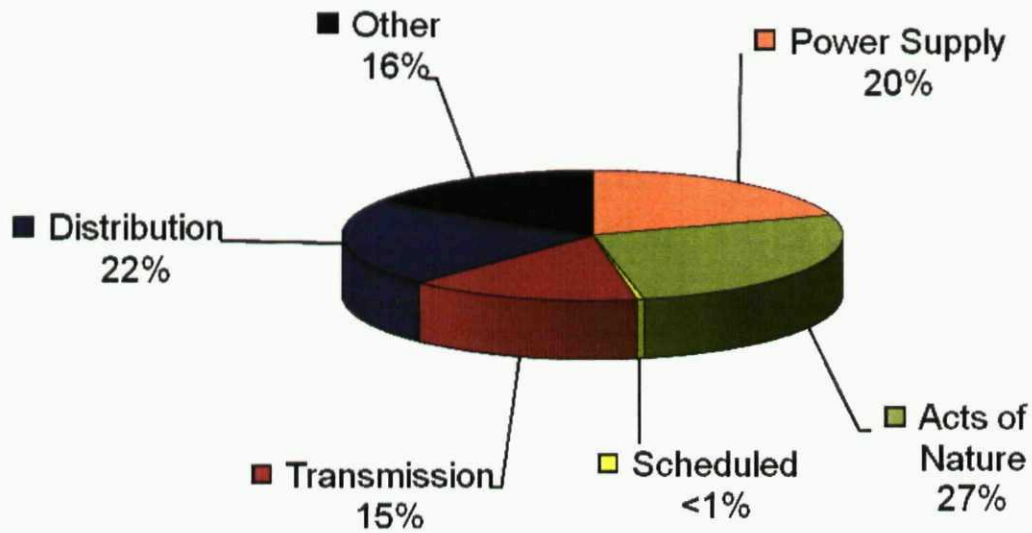


Figure 6 shows the breakdown by magnitude. The same descriptions and examples that were described following Figure 5 apply also for Figure 6. The causes of severe interruptions, in order from most to least, were "Acts of Nature," "Distribution," "Power Supply," "Other," "Transmission," and "Scheduled."

Exhibit 1
Attachment A

Outage Number	Circuit	Outage Start Time	Outage End Time	Duration	Class	Type	kW	Consumers
2009-4	1325	1/5/2009 11:39:00 AM	1/5/2009 12:30:00 PM	0:51:00	C	5	170	55
2009-5	3415	1/5/2009 6:55:00 PM	1/5/2009 9:00:00 PM	2:05:00	C	6	105	35
2009-6	3414	1/7/2009 10:38:54 AM	1/7/2009 10:42:17 AM	0:03:23	B	1	3140	859
2009-6	3313	1/7/2009 10:38:54 AM	1/7/2009 10:43:54 AM	0:05:00	B	1	3970	1396
2009-7	4124	1/8/2009 1:46:26 AM	1/8/2009 7:00:00 AM	5:13:34	C	5	300	100
2009-8	3414	1/10/2009 10:49:22 PM	1/10/2009 10:52:59 PM	0:03:37	C	2	2220	859
2009-8	3313	1/10/2009 10:49:21 PM	1/10/2009 10:53:32 PM	0:04:11	C	2	3180	1396
2009-9	1325	1/10/2009 10:56:39 PM	1/10/2009 11:58:24 PM	1:01:45	C	2	240	200
2009-10	4121	1/10/2009 10:49:36 PM	1/11/2009 6:00:00 AM	7:10:24	C	2	360	120
2009-11	3415	1/10/2009 11:46:42 PM	1/11/2009 9:30:00 AM	9:43:18	C	2	90	30
2009-12	2311	1/11/2009 3:27:00 AM	1/11/2009 8:30:00 AM	5:03:00	C	2	30	10
2009-13	1325	1/11/2009 4:55:59 PM	1/11/2009 5:22:24 PM	0:26:25	C	2	270	200
2009-13	1325	1/11/2009 12:36:27 PM	1/11/2009 1:14:23 PM	0:37:56	C	2	270	200
2009-13	1325	1/11/2009 10:02:11 AM	1/11/2009 11:43:49 AM	1:41:38	C	2	0	200
2009-14	5001	1/11/2009 11:35:00 AM	1/11/2009 3:00:00 PM	3:25:00	C	2	30	10
2009-15	2132	1/11/2009 12:30:00 PM	1/11/2009 6:45:00 PM	6:15:00	C	2	21	7
2009-16	3414	1/14/2009 7:13:14 AM	1/14/2009 7:15:05 AM	0:01:51	B	1	2450	859
2009-16	3313	1/14/2009 7:13:13 AM	1/14/2009 7:19:22 AM	0:06:09	B	1	3580	1396
2009-18	3127	1/14/2009 5:24:51 PM	1/14/2009 9:00:00 PM	3:35:09	C	2	90	30
2009-22	2134	1/15/2009 10:13:57 AM	1/15/2009 11:30:00 AM	1:16:03	C	2	18	6
2009-23	3122	1/15/2009 2:16:02 PM	1/15/2009 3:30:00 PM	1:13:58	C	2	3	1
2009-28	4002	1/16/2009 1:10:00 AM	1/16/2009 4:15:00 AM	3:05:00	C	2	75	25
2009-30	3415	1/16/2009 7:15:00 AM	1/16/2009 8:45:00 AM	1:30:00	C	2	24	8
2009-32	4002	1/16/2009 4:45:00 AM	1/16/2009 10:30:00 AM	5:45:00	C	2	12	4
2009-33	4002	1/16/2009 6:57:00 AM	1/16/2009 11:30:00 AM	4:33:00	C	2	60	20
2009-34	1325	1/16/2009 4:06:07 PM	1/16/2009 5:05:07 PM	0:59:00	C	6	250	200
2009-35	1232	1/16/2009 6:33:07 PM	1/16/2009 6:35:45 PM	0:02:38	C	2	210	10
2009-35	1232	1/16/2009 6:31:41 PM	1/16/2009 9:17:40 PM	2:45:59	C	2	210	10
2009-36	3415	1/16/2009 11:11:04 PM	1/16/2009 11:19:21 PM	0:08:17	C	2	375	125
2009-39	3411	1/16/2009 8:00:37 PM	1/17/2009 1:30:00 PM	17:29:23	C	2	9	3
2009-40	3415	1/17/2009 8:45:00 AM	1/17/2009 10:30:00 AM	1:45:00	C	2	300	100
2009-41	3415	1/20/2009 10:13:00 AM	1/20/2009 10:50:00 AM	0:37:00	C	5	450	150
2009-42	2134	1/21/2009 11:00:00 PM	1/22/2009 1:00:00 AM	2:00:00	C	5	30	10
2009-43	3411	1/27/2009 1:27:59 PM	1/27/2009 3:30:00 PM	2:02:01	C	5	30	10
2009-44	5001	1/28/2009 1:50:00 PM	1/28/2009 8:30:00 PM	6:40:00	C	6	5	1
2009-45	3411	2/2/2009 12:28:18 PM	2/2/2009 12:53:37 PM	0:25:19	C	6	2870	300
2009-45	3411	2/2/2009 12:28:18 PM	2/2/2009 5:15:00 PM	4:46:42	C	6	450	150
2009-46	2134	2/14/2009 4:06:27 AM	2/14/2009 4:50:58 AM	0:44:31	C	2	830	1528
2009-46	2134	2/14/2009 4:06:27 AM	2/14/2009 6:30:00 AM	2:23:33	C	2	15	5
2009-48	3411	2/15/2009 4:30:00 PM	2/15/2009 7:15:00 PM	2:45:00	C	2	150	50
2009-49	4123	2/20/2009 2:40:09 PM	2/20/2009 3:50:00 PM	1:09:51	C	6	5	1
2009-50	5001	2/24/2009 12:55:00 PM	2/24/2009 5:00:00 PM	4:05:00	C	6	150	50
2009-51	2311	2/25/2009 9:44:05 AM	2/25/2009 9:49:19 AM	0:05:14	C	2	1230	748
2009-51	2311	2/25/2009 10:26:04 AM	2/25/2009 10:33:54 AM	0:07:50	C	2	1230	748
2009-51	2311	2/25/2009 10:26:04 AM	2/25/2009 11:20:00 AM	0:53:56	C	2	30	10
2009-52	2132	2/25/2009 6:14:00 AM	2/25/2009 7:42:00 AM	1:28:00	C	2	24	8
2009-53	3415	2/25/2009 12:37:52 PM	2/25/2009 3:35:00 PM	2:57:08	C	2	300	100
2009-54	4002	2/26/2009 9:59:42 AM	2/26/2009 11:36:53 AM	1:37:11	C	3	390	471
2009-55	3415	2/28/2009 12:17:54 PM	2/28/2009 3:30:00 PM	3:12:06	C	6	120	40
2009-56	4002	3/1/2009 8:15:00 PM	3/2/2009 1:45:00 AM	5:30:00	C	5	150	50
2009-57	2314	3/3/2009 2:40:39 AM	3/3/2009 7:20:00 AM	4:39:21	C	5	330	100

Exhibit 1
Attachment A

2009-57	2314	3/2/2009 2:40:39 AM	3/3/2009 3:18:43 AM	24:38:04	C	5	680	768
2009-58	3313	3/4/2009 1:34:22 AM	3/4/2009 1:41:19 AM	0:06:57	C	6	2350	1396
2009-58	3313	3/4/2009 12:14:52 AM	3/4/2009 6:00:00 AM	5:45:08	C	6	75	25
2009-61	2314	3/9/2009 2:38:02 PM	3/9/2009 2:43:25 PM	0:05:23	C	5	1130	768
2009-62	3411	3/11/2009 7:00:00 PM	3/11/2009 9:00:00 PM	2:00:00	C	5	30	10
2009-63	3414	3/15/2009 12:29:50 PM	3/15/2009 2:30:00 PM	2:00:10	C	6	9	3
2009-64	3411	3/18/2009 4:00:00 PM	3/18/2009 6:00:00 PM	2:00:00	C	5	60	20
2009-65	5001	3/19/2009 9:30:00 PM	3/20/2009 12:01:00 AM	2:31:00	C	6	6	2
2009-66	2134	3/20/2009 10:40:00 PM	3/21/2009 1:30:00 AM	2:50:00	C	5	60	20
2009-67	3313	3/21/2009 4:55:09 AM	3/21/2009 8:30:00 AM	3:34:51	C	6	18	6
2009-69	4122	3/25/2009 8:00:00 PM	3/25/2009 10:00:00 PM	2:00:00	C	6	300	100
2009-70	3122	3/28/2009 1:24:24 PM	3/28/2009 1:25:45 PM	0:01:21	B	6	2490	300
2009-70	3127	3/28/2009 1:24:24 PM	3/28/2009 1:26:31 PM	0:02:07	B	6	3670	1569
2009-70	3122	3/28/2009 1:26:37 PM	3/28/2009 1:29:47 PM	0:03:10	B	6	2490	300
2009-71	2314	3/31/2009 10:25:47 AM	3/31/2009 12:45:00 PM	2:19:13	C	5	30	10
2009-72	4124	4/4/2009 11:29:44 AM	4/4/2009 4:30:00 PM	5:00:16	C	5	150	50
2009-73	3127	4/5/2009 8:37:49 AM	4/5/2009 11:30:00 AM	2:52:11	C	6	15	5
2009-74	3415	4/6/2009 10:25:00 PM	4/7/2009 6:00:00 AM	7:35:00	C	5	150	50
2009-76	3121	4/10/2009 7:42:18 AM	4/10/2009 11:00:00 AM	3:17:42	C	5	150	50
2009-77	4122	4/15/2009 3:20:00 AM	4/15/2009 8:30:00 AM	5:10:00	C	5	150	50
2009-78	3122	4/15/2009 6:06:39 AM	4/15/2009 6:09:43 AM	0:03:04	B	1	2950	300
2009-78	3127	4/15/2009 6:06:39 AM	4/15/2009 6:10:57 AM	0:04:18	B	1	2950	1569
2009-79	2311	4/19/2009 12:08:43 PM	4/19/2009 8:48:00 PM	8:39:17	C	5	12	4
2009-81	2311	4/20/2009 12:13:30 AM	4/20/2009 12:25:47 AM	0:12:17	C	5	760	748
2009-83	5002	4/20/2009 7:57:59 AM	4/20/2009 10:00:00 AM	2:02:01	C	5	120	40
2009-84	5002	4/21/2009 6:58:23 AM	4/21/2009 8:00:00 AM	1:01:37	C	5	120	40
2009-85	5001	4/21/2009 10:00:00 AM	4/21/2009 11:30:00 AM	1:30:00	C	5	20	7
2009-86	1232	4/25/2009 2:03:57 PM	4/25/2009 3:30:00 PM	1:26:03	C	5	20	7
2009-87	1432	4/26/2009 1:00:00 PM	4/26/2009 4:00:00 PM	3:00:00	C	5	30	10
2009-88	4122	4/27/2009 1:00:00 PM	4/27/2009 1:15:00 PM	0:15:00	C	5	18	6
2009-89	2134	4/28/2009 9:39:32 AM	4/28/2009 9:41:40 AM	0:02:08	B	4	1350	1528
2009-89	5001	4/28/2009 9:39:31 AM	4/28/2009 9:41:40 AM	0:02:09	B	4	1110	876
2009-89	2133	4/28/2009 9:39:32 AM	4/28/2009 9:42:36 AM	0:03:04	B	4	240	406
2009-89	3123	4/28/2009 9:39:33 AM	4/28/2009 9:42:47 AM	0:03:14	B	4	1310	1187
2009-89	2314	4/28/2009 9:39:33 AM	4/28/2009 9:43:42 AM	0:04:09	B	4	1280	768
2009-89	2311	4/28/2009 9:39:33 AM	4/28/2009 9:44:19 AM	0:04:46	B	4	1140	748
2009-89	3414	4/28/2009 9:39:33 AM	4/28/2009 9:44:43 AM	0:05:10	B	4	2870	859
2009-89	3411	4/28/2009 9:39:33 AM	4/28/2009 9:55:04 AM	0:15:31	B	4	2780	300
2009-89	3121	4/28/2009 9:39:33 AM	4/28/2009 9:55:45 AM	0:16:12	B	4	2430	650
2009-89	3412	4/28/2009 9:39:33 AM	4/28/2009 9:55:45 AM	0:16:12	B	4	1180	1004
2009-89	3127	4/28/2009 9:39:33 AM	4/28/2009 9:56:44 AM	0:17:11	B	4	4170	1569
2009-89	3122	4/28/2009 9:39:33 AM	4/28/2009 9:57:27 AM	0:17:54	B	4	3310	300
2009-91	3122	4/29/2009 2:45:56 PM	4/29/2009 2:48:20 PM	0:02:24	B	1	3120	300
2009-91	3127	4/29/2009 2:45:56 PM	4/29/2009 2:48:49 PM	0:02:53	B	1	4660	1569
2009-93	2133	5/4/2009 10:17:34 AM	5/4/2009 10:23:36 AM	0:06:02	B	1	230	406
2009-93	3415	5/4/2009 10:17:32 AM	5/4/2009 10:24:06 AM	0:06:34	B	1	2020	1612
2009-93	3314	5/4/2009 10:17:29 AM	5/4/2009 10:24:58 AM	0:07:29	B	1	460	552
2009-93	3412	5/4/2009 10:17:32 AM	5/4/2009 10:30:09 AM	0:12:37	B	1	1170	1004
2009-93	3414	5/4/2009 10:17:32 AM	5/4/2009 10:30:27 AM	0:12:55	B	1	280	859
2009-93	1322	5/4/2009 10:17:29 AM	5/4/2009 10:30:27 AM	0:12:58	B	1	830	700
2009-95	3126	5/4/2009 2:00:00 PM	5/4/2009 4:00:00 PM	2:00:00	C	6	5	19
2009-96	4124	5/5/2009 3:20:05 PM	5/5/2009 7:00:00 PM	3:39:55	C	5	300	100

Exhibit 1
Attachment A

2009-97	1233	5/5/2009 4:43:49 PM	5/5/2009 4:56:23 PM	0:12:34	B	4	770	30
2009-97	1232	5/5/2009 4:43:49 PM	5/5/2009 4:56:23 PM	0:12:34	B	4	270	10
2009-97	1432	5/5/2009 4:43:49 PM	5/5/2009 4:56:23 PM	0:12:34	B	4	250	300
2009-97	5702	5/5/2009 4:43:49 PM	5/5/2009 4:56:23 PM	0:12:34	B	4	0	0
2009-97	1231	5/5/2009 4:43:49 PM	5/5/2009 4:56:23 PM	0:12:34	B	4	920	0
2009-97	3415	5/5/2009 4:43:52 PM	5/5/2009 4:58:25 PM	0:14:33	B	1	2300	1612
2009-97	3413	5/5/2009 4:43:52 PM	5/5/2009 4:58:43 PM	0:14:51	B	1	310	2735
2009-97	3412	5/5/2009 4:43:52 PM	5/5/2009 4:59:14 PM	0:15:22	B	1	1220	1004
2009-97	3314	5/5/2009 4:43:55 PM	5/5/2009 5:00:40 PM	0:16:45	B	1	370	552
2009-97	2133	5/5/2009 4:43:52 PM	5/5/2009 5:01:41 PM	0:17:49	B	1	240	406
2009-97	1323	5/5/2009 4:43:49 PM	5/5/2009 5:17:49 PM	0:34:00	B	4	1920	1385
2009-97	1322	5/5/2009 4:43:49 PM	5/5/2009 5:18:58 PM	0:35:09	B	4	870	700
2009-97	1325	5/5/2009 4:43:49 PM	5/5/2009 5:19:37 PM	0:35:48	B	4	560	200
2009-97	5712	5/5/2009 4:43:49 PM	5/5/2009 6:31:10 PM	1:47:21	B	4	0	0
2009-100	4122	5/9/2009 2:17:17 AM	5/9/2009 2:26:04 AM	0:08:47	B	6	1210	1972
2009-100	4122	5/9/2009 2:26:04 AM	5/9/2009 3:36:04 AM	1:10:00	B	6	1210	1972
2009-102	3413	5/13/2009 3:00:13 AM	5/13/2009 3:01:54 AM	0:01:41	B	6	150	2735
2009-102	3314	5/13/2009 3:00:16 AM	5/13/2009 3:02:51 AM	0:02:35	B	6	250	552
2009-102	2133	5/13/2009 3:00:15 AM	5/13/2009 3:03:09 AM	0:02:54	B	6	120	406
2009-102	1322	5/13/2009 3:00:12 AM	5/13/2009 3:03:26 AM	0:03:14	B	6	600	700
2009-102	3412	5/13/2009 3:00:13 AM	5/13/2009 3:03:59 AM	0:03:46	B	6	750	1004
2009-102	3415	5/13/2009 3:00:13 AM	5/13/2009 3:05:04 AM	0:04:51	B	6	1180	1612
2009-103	4124	5/14/2009 5:20:47 PM	5/14/2009 8:30:00 PM	3:09:13	C	5	600	200
2009-104	5002	5/18/2009 4:12:26 PM	5/18/2009 4:16:46 PM	0:04:20	B	1	2290	1980
2009-104	4124	5/18/2009 4:12:26 PM	5/18/2009 4:17:22 PM	0:04:56	B	1	3350	1926
2009-104	4123	5/18/2009 4:12:26 PM	5/18/2009 4:18:08 PM	0:05:42	B	1	740	225
2009-104	4122	5/18/2009 4:12:26 PM	5/18/2009 4:19:01 PM	0:06:35	B	1	2510	1972
2009-104	4121	5/18/2009 4:12:26 PM	5/18/2009 4:19:24 PM	0:06:58	B	1	770	430
2009-104	3415	5/18/2009 4:12:26 PM	5/18/2009 4:19:56 PM	0:07:30	B	1	2030	1612
2009-104	3413	5/18/2009 4:12:26 PM	5/18/2009 4:20:17 PM	0:07:51	B	1	280	2735
2009-104	3412	5/18/2009 4:12:26 PM	5/18/2009 4:21:02 PM	0:08:36	B	1	1190	1004
2009-104	3314	5/18/2009 4:12:27 PM	5/18/2009 4:21:16 PM	0:08:49	B	1	400	552
2009-104	2134	5/18/2009 4:12:27 PM	5/18/2009 4:21:48 PM	0:09:21	B	1	1390	1528
2009-104	3313	5/18/2009 4:12:27 PM	5/18/2009 4:22:04 PM	0:09:37	B	1	3800	1396
2009-104	2133	5/18/2009 4:12:27 PM	5/18/2009 4:22:20 PM	0:09:53	B	1	250	406
2009-104	2132	5/18/2009 4:12:27 PM	5/18/2009 4:22:31 PM	0:10:04	B	1	620	718
2009-104	1432	5/18/2009 4:12:26 PM	5/18/2009 4:22:45 PM	0:10:19	B	1	240	300
2009-104	1322	5/18/2009 4:12:27 PM	5/18/2009 4:22:57 PM	0:10:30	B	1	930	700
2009-104	3411	5/18/2009 4:11:26 PM	5/18/2009 4:23:16 PM	0:11:50	B	1	2890	300
2009-104	3127	5/18/2009 4:11:24 PM	5/18/2009 4:23:35 PM	0:12:11	B	1	4260	1569
2009-104	3123	5/18/2009 4:11:24 PM	5/18/2009 4:24:18 PM	0:12:54	B	1	1470	1187
2009-104	3122	5/18/2009 4:11:24 PM	5/18/2009 4:24:40 PM	0:13:16	B	1	2780	300
2009-104	3121	5/18/2009 4:11:24 PM	5/18/2009 4:25:11 PM	0:13:47	B	1	2470	650
2009-104	2312	5/18/2009 4:11:28 PM	5/18/2009 4:34:06 PM	0:22:38	B	1	2030	754
2009-104	5001	5/18/2009 4:11:24 PM	5/18/2009 4:34:30 PM	0:23:06	B	1	1150	876
2009-104	3414	5/18/2009 4:11:26 PM	5/18/2009 4:34:51 PM	0:23:25	B	1	2850	859
2009-104	2314	5/18/2009 4:11:28 PM	5/18/2009 4:35:17 PM	0:23:49	B	1	1170	768
2009-104	2311	5/18/2009 4:11:28 PM	5/18/2009 4:36:07 PM	0:24:39	B	1	1260	748
2009-105	1323	5/20/2009 4:42:09 PM	5/20/2009 4:43:22 PM	0:01:13	B	4	1700	1385
2009-105	1325	5/20/2009 4:42:09 PM	5/20/2009 4:43:45 PM	0:01:36	B	4	530	200
2009-105	1322	5/20/2009 4:42:09 PM	5/20/2009 4:44:02 PM	0:01:53	B	4	890	700
2009-105	1233	5/20/2009 4:42:08 PM	5/20/2009 4:44:30 PM	0:02:22	B	4	640	30

Exhibit 1
Attachment A

2009-105	1232	5/20/2009 4:42:08 PM	5/20/2009 4:44:55 PM	0:02:47	B	4	260	10
2009-108	4121	5/25/2009 9:40:00 PM	5/26/2009 1:20:00 AM	3:40:00	C	6	30	10
2009-109	3411	5/29/2009 11:15:38 AM	5/29/2009 12:00:00 PM	0:44:22	C	6	150	50
2009-110	4122	6/2/2009 8:50:00 AM	6/2/2009 9:40:00 AM	0:50:00	C	3	60	20
2009-111	3122	6/8/2009 5:08:20 AM	6/8/2009 11:00:00 AM	5:51:40	C	5	45	15
2009-112	3127	6/8/2009 8:30:00 PM	6/9/2009 12:20:00 AM	3:50:00	C	5	60	20
2009-113	4122	6/15/2009 2:10:00 AM	6/15/2009 5:00:00 AM	2:50:00	C	6	450	150
2009-114	1323	6/16/2009 4:18:51 PM	6/16/2009 5:23:27 PM	1:04:36	A	6	2020	1385
2009-114	1231	6/16/2009 4:18:51 PM	6/16/2009 5:25:00 PM	1:06:09	A	6	1100	0
2009-114	1232	6/16/2009 4:18:51 PM	6/16/2009 5:25:36 PM	1:06:45	A	6	340	10
2009-114	1233	6/16/2009 4:18:51 PM	6/16/2009 5:26:07 PM	1:07:16	A	6	790	30
2009-114	1325	6/16/2009 4:18:55 PM	6/16/2009 5:38:17 PM	1:19:22	A	6	590	200
2009-114	1322	6/16/2009 4:18:55 PM	6/16/2009 5:38:56 PM	1:20:01	A	6	890	700
2009-114	1432	6/16/2009 4:18:51 PM	6/16/2009 6:26:56 PM	2:08:05	A	6	260	300
2009-115	3411	6/18/2009 9:50:00 PM	6/19/2009 1:30:00 AM	3:40:00	C	5	150	50
2009-116	2134	6/21/2009 7:05:00 AM	6/21/2009 10:00:00 AM	2:55:00	C	2	30	10
2009-117	1325	6/21/2009 12:05:00 PM	6/21/2009 4:45:00 PM	4:40:00	C	2	20	7
2009-118	2134	6/21/2009 3:20:02 PM	6/21/2009 5:00:00 PM	1:39:58	C	2	60	20
2009-120	3412	6/22/2009 4:30:00 PM	6/22/2009 7:00:00 PM	2:30:00	C	6	150	50
2009-121	4124	6/30/2009 8:48:15 PM	7/1/2009 4:20:00 AM	7:31:45	C	5	600	200
2009-122	3411	6/30/2009 11:34:18 PM	7/1/2009 12:10:00 AM	0:35:42	C	5	24	8
2009-123	2134	7/7/2009 11:45:00 AM	7/7/2009 5:00:00 PM	5:15:00	C	2	45	15
2009-124	3411	7/8/2009 7:09:21 PM	7/8/2009 10:30:00 PM	3:20:39	C	5	300	100
2009-125	2134	7/11/2009 6:20:00 PM	7/11/2009 9:00:00 PM	2:40:00	C	5	60	20
2009-128	3411	7/20/2009 9:50:00 PM	7/20/2009 11:45:00 PM	1:55:00	C	6	120	40
2009-129	4124	7/21/2009 10:45:21 AM	7/21/2009 2:30:00 PM	3:44:39	C	5	60	20
2009-130	3411	7/22/2009 7:47:51 PM	7/22/2009 10:00:00 PM	2:12:09	C	5	18	6
2009-131	2314	7/22/2009 11:14:28 PM	7/23/2009 2:00:00 AM	2:45:32	C	6	60	20
2009-133	3127	7/23/2009 11:52:51 AM	7/23/2009 1:17:00 PM	1:24:09	C	2	60	20
2009-134	3415	7/23/2009 12:59:27 PM	7/23/2009 2:00:00 PM	1:00:33	C	2	30	10
2009-135	3121	7/23/2009 2:05:33 PM	7/23/2009 2:15:55 PM	0:10:22	C	2	2830	650
2009-136	3121	7/24/2009 11:54:55 PM	7/25/2009 1:30:00 AM	1:35:05	C	6	15	5
2009-137	5001	7/26/2009 9:47:31 PM	7/26/2009 9:49:12 PM	0:01:41	B	1	1370	876
2009-137	3414	7/26/2009 9:47:31 PM	7/26/2009 9:50:59 PM	0:03:28	B	1	3120	859
2009-137	2314	7/26/2009 9:47:33 PM	7/26/2009 9:52:22 PM	0:04:49	B	1	1380	768
2009-137	2311	7/26/2009 9:47:33 PM	7/26/2009 9:53:11 PM	0:05:38	B	1	1470	748
2009-138	3121	7/27/2009 10:42:15 AM	7/27/2009 11:30:00 AM	0:47:45	C	6	30	10
2009-141	5002	7/31/2009 7:50:00 PM	7/31/2009 9:45:00 PM	1:55:00	C	5	120	1980
2009-142	5002	8/3/2009 1:39:29 AM	8/3/2009 6:45:00 AM	5:05:31	C	5	120	1980
2009-143	1323	8/3/2009 10:55:00 PM	8/4/2009 2:00:00 AM	3:05:00	C	5	21	7
2009-144	2313	8/4/2009 9:18:39 AM	8/4/2009 9:52:00 AM	0:33:21	C	5	3780	717
2009-144	2313	8/4/2009 9:18:00 AM	8/4/2009 2:20:00 PM	5:02:00	C	5	120	40
2009-146	2134	8/4/2009 10:23:12 AM	8/4/2009 11:40:00 AM	1:16:48	C	6	30	10
2009-147	5747	8/9/2009 3:00:09 AM	8/9/2009 4:22:38 AM	1:22:29	A	2	0	0
2009-147	4002	8/9/2009 3:00:09 AM	8/9/2009 4:22:38 AM	1:22:29	A	2	290	471
2009-147	4124	8/9/2009 3:00:09 AM	8/9/2009 4:25:00 AM	1:24:51	A	2	2480	1926
2009-147	4122	8/9/2009 3:00:09 AM	8/9/2009 4:33:37 AM	1:33:28	A	2	1520	1972
2009-147	4123	8/9/2009 3:00:09 AM	8/9/2009 4:36:55 AM	1:36:46	A	2	660	225
2009-147	4121	8/9/2009 3:00:07 AM	8/9/2009 5:23:00 AM	2:22:53	A	2	490	430
2009-148	2313	8/9/2009 6:09:34 AM	8/9/2009 8:10:06 AM	2:00:32	C	5	36	12
2009-149	3415	8/9/2009 10:10:00 AM	8/9/2009 12:30:00 PM	2:20:00	C	6	18	6
2009-150	3411	8/10/2009 3:52:00 PM	8/10/2009 5:30:00 PM	1:38:00	C	6	30	10

Exhibit 1
Attachment A

2009-151	2134	8/11/2009 3:00:00 PM	8/11/2009 5:35:00 PM	2:35:00	C	6	30	10
2009-152	1232	8/11/2009 6:35:22 PM	8/11/2009 11:30:00 PM	4:54:38	C	2	9	3
2009-153	3415	8/12/2009 3:17:34 AM	8/12/2009 5:30:00 AM	2:12:26	C	2	30	10
2009-154	3411	8/12/2009 10:15:00 AM	8/12/2009 12:00:00 PM	1:45:00	C	2	30	10
2009-155	3411	8/13/2009 6:04:22 AM	8/13/2009 8:00:00 AM	1:55:38	C	2	30	10
2009-156	3121	8/13/2009 8:30:18 AM	8/13/2009 9:15:00 AM	0:44:42	C	2	30	10
2009-157	3121	8/15/2009 8:36:22 PM	8/15/2009 10:00:00 PM	1:23:38	C	6	18	6
2009-158	5722	8/18/2009 8:45:33 AM	8/18/2009 8:59:14 AM	0:13:41	D	4	0	0
2009-158	5746	8/18/2009 8:45:31 AM	8/18/2009 8:59:53 AM	0:14:22	A	2	0	0
2009-158	5706	8/18/2009 8:45:30 AM	8/18/2009 9:00:50 AM	0:15:20	A	2	0	0
2009-158	5745	8/18/2009 8:45:31 AM	8/18/2009 9:01:21 AM	0:15:50	A	2	0	0
2009-158	4002	8/18/2009 8:45:31 AM	8/18/2009 9:01:53 AM	0:16:22	A	2	570	471
2009-158	5747	8/18/2009 8:45:31 AM	8/18/2009 9:01:53 AM	0:16:22	A	2	0	0
2009-158	4124	8/18/2009 8:45:31 AM	8/18/2009 9:04:26 AM	0:18:55	A	2	4290	1926
2009-158	4123	8/18/2009 8:45:31 AM	8/18/2009 9:05:00 AM	0:19:29	A	2	930	225
2009-158	4122	8/18/2009 8:45:31 AM	8/18/2009 9:05:45 AM	0:20:14	A	2	2670	1972
2009-158	4121	8/18/2009 8:45:31 AM	8/18/2009 9:06:15 AM	0:20:44	A	2	840	430
2009-158	3415	8/18/2009 8:45:31 AM	8/18/2009 9:07:48 AM	0:22:17	A	2	2220	1612
2009-158	3414	8/18/2009 8:45:31 AM	8/18/2009 9:09:17 AM	0:23:46	A	2	3170	859
2009-158	3411	8/18/2009 8:45:31 AM	8/18/2009 9:12:01 AM	0:26:30	A	2	3170	300
2009-158	3413	8/18/2009 8:45:31 AM	8/18/2009 9:13:54 AM	0:28:23	A	2	320	2735
2009-158	3412	8/18/2009 8:45:31 AM	8/18/2009 9:21:19 AM	0:35:48	A	2	1120	1004
2009-159	3411	8/20/2009 8:20:00 AM	8/20/2009 9:15:00 AM	0:55:00	C	2	30	10
2009-160	3415	8/20/2009 9:40:00 AM	8/20/2009 12:00:00 PM	2:20:00	C	2	30	10
2009-161	2311	8/24/2009 3:55:00 PM	8/24/2009 6:00:00 PM	2:05:00	C	5	30	10
2009-162	3124	8/24/2009 6:30:28 PM	8/24/2009 6:32:22 PM	0:01:54	C	5	50	210
2009-162	3125	8/24/2009 6:30:11 PM	8/24/2009 6:33:31 PM	0:03:20	C	5	1000	766
2009-162	3125	8/24/2009 4:52:00 PM	8/24/2009 6:30:11 PM	1:38:11	C	5	1240	766
2009-162	3124	8/24/2009 4:52:00 PM	8/24/2009 6:30:28 PM	1:38:28	C	5	510	210
2009-163	3313	8/31/2009 11:15:57 AM	8/31/2009 11:25:51 AM	0:09:54	C	5	4550	1396
2009-163	3313	8/31/2009 11:15:09 AM	8/31/2009 11:45:00 AM	0:29:51	C	5	222	74
2009-164	1322	8/31/2009 3:31:16 PM	8/31/2009 9:30:00 PM	5:58:44	C	5	27	9
2009-165	2311	9/1/2009 2:03:09 PM	9/1/2009 2:06:45 PM	0:03:36	C	6	1150	748
2009-165	2311	9/1/2009 1:56:35 PM	9/1/2009 2:03:09 PM	0:06:34	C	6	1150	748
2009-165	2311	9/1/2009 1:36:10 PM	9/1/2009 2:43:00 PM	1:06:50	C	6	84	28
2009-166	2133	9/2/2009 10:40:32 PM	9/3/2009 2:00:00 AM	3:19:28	C	6	24	8
2009-167	3412	9/3/2009 9:10:00 PM	9/3/2009 11:00:00 PM	1:50:00	C	5	45	15
2009-168	3415	9/4/2009 8:30:00 AM	9/4/2009 10:30:00 AM	2:00:00	C	6	90	30
2009-169	3411	9/4/2009 4:02:13 PM	9/4/2009 4:04:51 PM	0:02:38	B	1	3040	300
2009-169	3123	9/4/2009 4:02:11 PM	9/4/2009 4:05:16 PM	0:03:05	B	1	1550	1187
2009-169	2312	9/4/2009 4:02:12 PM	9/4/2009 4:05:46 PM	0:03:34	B	1	2510	754
2009-169	5001	9/4/2009 3:23:58 PM	9/4/2009 3:27:52 PM	0:03:54	B	1	1440	876
2009-169	4124	9/4/2009 3:24:00 PM	9/4/2009 3:28:07 PM	0:04:07	B	1	4030	1926
2009-169	4123	9/4/2009 3:24:00 PM	9/4/2009 3:29:21 PM	0:05:21	B	1	910	225
2009-169	4122	9/4/2009 3:24:00 PM	9/4/2009 3:29:40 PM	0:05:40	B	1	2560	1972
2009-169	4121	9/4/2009 3:24:00 PM	9/4/2009 3:30:17 PM	0:06:17	B	1	960	430
2009-169	3415	9/4/2009 3:23:58 PM	9/4/2009 3:30:52 PM	0:06:54	B	1	2010	1612
2009-169	3414	9/4/2009 3:23:58 PM	9/4/2009 3:33:26 PM	0:09:28	B	1	3440	859
2009-169	3413	9/4/2009 3:23:58 PM	9/4/2009 3:33:54 PM	0:09:56	B	1	300	2735
2009-169	3121	9/4/2009 3:18:21 PM	9/4/2009 3:28:57 PM	0:10:36	B	1	4270	650
2009-169	3412	9/4/2009 3:23:58 PM	9/4/2009 3:34:51 PM	0:10:53	B	1	1320	1004
2009-169	3314	9/4/2009 3:24:02 PM	9/4/2009 3:35:20 PM	0:11:18	B	1	470	552

Exhibit 1
Attachment A

2009-169	2314	9/4/2009 3:23:59 PM	9/4/2009 3:35:33 PM	0:11:34	B	1	1290	768
2009-169	2311	9/4/2009 3:23:59 PM	9/4/2009 3:36:19 PM	0:12:20	B	1	1190	748
2009-169	2133	9/4/2009 3:24:00 PM	9/4/2009 3:36:37 PM	0:12:37	B	1	230	406
2009-169	2132	9/4/2009 3:24:00 PM	9/4/2009 3:36:54 PM	0:12:54	B	1	810	718
2009-169	1432	9/4/2009 3:24:01 PM	9/4/2009 3:37:05 PM	0:13:04	B	1	250	300
2009-169	1322	9/4/2009 3:24:01 PM	9/4/2009 3:37:15 PM	0:13:14	B	1	910	700
2009-169	5002	9/4/2009 3:18:21 PM	9/4/2009 3:37:32 PM	0:19:11	B	1	1610	1980
2009-169	3313	9/4/2009 3:18:22 PM	9/4/2009 3:39:24 PM	0:21:02	B	1	4220	1396
2009-169	3127	9/4/2009 3:18:21 PM	9/4/2009 3:40:37 PM	0:22:16	B	1	3750	1569
2009-169	3122	9/4/2009 3:18:21 PM	9/4/2009 3:41:17 PM	0:22:56	B	1	3540	300
2009-169	2134	9/4/2009 3:18:20 PM	9/4/2009 3:41:38 PM	0:23:18	B	1	1360	1528
2009-169	3411	9/4/2009 3:17:19 PM	9/4/2009 3:41:52 PM	0:24:33	B	1	3120	300
2009-169	3123	9/4/2009 3:17:22 PM	9/4/2009 3:43:01 PM	0:25:39	B	1	1840	1187
2009-169	2312	9/4/2009 3:17:19 PM	9/4/2009 3:45:50 PM	0:28:31	B	1	2500	754
2009-171	4002	9/11/2009 5:30:00 AM	9/11/2009 9:30:00 AM	4:00:00	C	6	75	25
2009-173	3122	9/14/2009 3:00:11 PM	9/14/2009 6:00:00 PM	2:59:49	C	5	3	1
2009-174	4002	9/15/2009 8:00:00 AM	9/15/2009 11:30:00 AM	3:30:00	C	5	90	30
2009-175	3415	9/18/2009 7:20:00 AM	9/18/2009 9:30:00 AM	2:10:00	C	6	60	20
2009-176	3121	9/21/2009 11:55:00 AM	9/21/2009 1:30:00 PM	1:35:00	C	6	15	45
2009-177	3412	9/23/2009 6:00:00 AM	9/23/2009 8:30:00 AM	2:30:00	C	5	45	15
2009-178	4002	9/23/2009 1:20:00 PM	9/23/2009 5:00:00 PM	3:40:00	C	6	30	10
2009-179	4122	9/24/2009 7:45:00 AM	9/24/2009 9:00:00 AM	1:15:00	C	5	12	4
2009-180	1322	9/27/2009 10:32:03 AM	9/27/2009 12:30:00 PM	1:57:57	C	6	3	1
2009-181	3121	9/27/2009 3:33:44 PM	9/27/2009 9:00:00 PM	5:26:16	C	6	3	1
2009-182	2134	9/30/2009 12:21:25 PM	9/30/2009 1:00:00 PM	0:38:35	C	6	36	12
2009-183	4121	10/4/2009 4:00:00 AM	10/4/2009 12:15:00 PM	8:15:00	C	5	75	25
2009-184	2132	10/4/2009 3:00:00 PM	10/4/2009 7:00:00 PM	4:00:00	C	6	18	6
2009-185	5747	10/5/2009 12:57:00 AM	10/5/2009 1:02:41 AM	0:05:41	A	2	0	0
2009-185	4002	10/5/2009 12:57:00 AM	10/5/2009 1:02:42 AM	0:05:42	A	2	260	471
2009-185	4121	10/5/2009 12:57:00 AM	10/5/2009 1:03:36 AM	0:06:36	A	2	450	430
2009-185	4123	10/5/2009 12:57:00 AM	10/5/2009 1:04:44 AM	0:07:44	A	2	560	225
2009-185	4122	10/5/2009 12:57:00 AM	10/5/2009 1:05:51 AM	0:08:51	A	2	1340	1972
2009-185	4124	10/5/2009 12:57:00 AM	10/5/2009 1:08:20 AM	0:11:20	A	2	2760	1926
2009-186	4002	10/5/2009 9:40:00 PM	10/6/2009 1:30:00 AM	3:50:00	C	6	15	471
2009-187	3127	10/6/2009 11:45:00 AM	10/6/2009 3:15:00 PM	3:30:00	C	5	72	1569
2009-188	5002	10/6/2009 6:25:00 PM	10/6/2009 11:30:00 PM	5:05:00	C	6	15	1980
2009-189	4002	10/10/2009 12:40:00 AM	10/10/2009 4:15:00 AM	3:35:00	C	6	30	471
2009-190	2134	10/10/2009 10:35:29 AM	10/10/2009 11:40:00 AM	1:04:31	C	6	24	8
2009-191	3127	10/11/2009 4:00:00 AM	10/11/2009 11:00:00 AM	7:00:00	C	5	150	50
2009-193	4124	10/15/2009 4:26:04 PM	10/15/2009 8:00:00 PM	3:33:56	C	5	75	25
2009-194	4122	10/18/2009 3:47:00 PM	10/18/2009 9:00:00 PM	5:13:00	C	5	75	25
2009-195	3412	10/22/2009 10:26:49 AM	10/22/2009 3:30:00 PM	5:03:11	C	5	9	3
2009-196	4122	10/23/2009 7:55:00 AM	10/23/2009 11:00:00 AM	3:05:00	C	6	9	3
2009-197	1322	10/23/2009 1:04:35 PM	10/23/2009 2:30:00 PM	1:25:25	C	5	60	20
2009-199	3127	10/28/2009 6:20:08 AM	10/28/2009 7:40:00 AM	1:19:52	C	6	3	1
2009-200	4122	10/29/2009 9:55:00 AM	10/29/2009 12:00:00 PM	2:05:00	C	5	30	10
2009-201	3127	10/31/2009 8:22:55 AM	10/31/2009 8:24:13 AM	0:01:18	C	6	3240	1569
2009-201	3127	10/31/2009 8:22:55 AM	10/31/2009 2:00:00 PM	5:37:05	C	6	6	3
2009-203	2134	11/2/2009 2:21:05 AM	11/2/2009 7:00:00 AM	4:38:55	C	6	90	30
2009-204	4122	11/3/2009 11:45:00 AM	11/3/2009 1:30:00 PM	1:45:00	C	6	60	20
2009-205	2134	11/3/2009 5:02:43 PM	11/3/2009 7:00:00 PM	1:57:17	C	6	30	10
2009-206	3411	11/4/2009 3:28:07 PM	11/4/2009 5:00:00 PM	1:31:53	C	5	30	10

Exhibit 1
Attachment A

2009-207	2311	11/7/2009 3:25:31 PM	11/7/2009 7:00:00 PM	3:34:29	C	6	9	3
2009-208	2132	11/8/2009 10:12:24 AM	11/8/2009 10:14:21 AM	0:01:57	B	1	780	718
2009-208	3123	11/8/2009 10:12:24 AM	11/8/2009 10:15:04 AM	0:02:40	B	1	900	1187
2009-208	3127	11/8/2009 10:12:24 AM	11/8/2009 10:16:55 AM	0:04:31	B	1	3650	1569
2009-209	4002	11/10/2009 5:40:00 PM	11/10/2009 9:00:00 PM	3:20:00	C	2	60	20
2009-210	4122	11/10/2009 5:45:00 PM	11/10/2009 8:30:00 PM	2:45:00	C	2	60	20
2009-211	4122	11/10/2009 8:40:00 PM	11/10/2009 11:30:00 PM	2:50:00	C	2	3	1
2009-213	3415	11/11/2009 11:00:00 AM	11/11/2009 12:00:00 PM	1:00:00	C	2	225	75
2009-213	3415	11/11/2009 9:23:00 AM	11/11/2009 10:30:00 AM	1:07:00	C	2	225	75
2009-214	4122	11/11/2009 11:12:00 AM	11/11/2009 6:00:00 PM	6:48:00	C	6	12	4
2009-215	3411	11/11/2009 11:18:58 AM	11/11/2009 2:15:00 PM	2:56:02	C	2	195	65
2009-217	3411	11/11/2009 11:40:00 AM	11/11/2009 1:00:00 PM	1:20:00	C	6	60	20
2009-218	4122	11/11/2009 11:50:00 AM	11/11/2009 6:00:00 PM	6:10:00	C	2	24	8
2009-219	2132	11/11/2009 1:22:00 PM	11/11/2009 3:15:00 PM	1:53:00	C	2	18	6
2009-223	3411	11/11/2009 2:09:00 PM	11/11/2009 5:00:00 PM	2:51:00	C	6	45	15
2009-224	3411	11/11/2009 2:50:00 PM	11/11/2009 6:00:00 PM	3:10:00	C	2	21	7
2009-225	4122	11/12/2009 8:50:00 AM	11/12/2009 11:00:00 AM	2:10:00	C	5	30	10
2009-226	3411	11/13/2009 3:30:01 AM	11/13/2009 9:00:00 AM	5:29:59	C	2	60	20
2009-228	5747	11/14/2009 10:03:55 AM	11/14/2009 10:05:51 AM	0:01:56	A	2	0	0
2009-228	4002	11/14/2009 10:03:55 AM	11/14/2009 10:05:52 AM	0:01:57	A	2	460	471
2009-228	4121	11/14/2009 10:03:55 AM	11/14/2009 10:06:27 AM	0:02:32	A	2	820	430
2009-228	4122	11/14/2009 10:03:55 AM	11/14/2009 10:06:55 AM	0:03:00	A	2	2830	1972
2009-228	4123	11/14/2009 10:03:55 AM	11/14/2009 10:07:07 AM	0:03:12	A	2	2100	225
2009-228	4124	11/14/2009 10:03:55 AM	11/14/2009 10:10:10 AM	0:06:15	A	2	4040	1926
2009-229	5747	11/14/2009 12:27:03 PM	11/14/2009 12:29:03 PM	0:02:00	A	2	0	0
2009-229	4002	11/14/2009 12:27:03 PM	11/14/2009 12:29:04 PM	0:02:01	A	2	410	471
2009-229	4124	11/14/2009 12:27:03 PM	11/14/2009 12:29:45 PM	0:02:42	A	2	3500	1926
2009-229	4123	11/14/2009 12:27:03 PM	11/14/2009 12:30:51 PM	0:03:48	A	2	1780	225
2009-229	4121	11/14/2009 12:27:03 PM	11/14/2009 12:33:11 PM	0:06:08	A	2	680	430
2009-229	4122	11/14/2009 12:27:03 PM	11/14/2009 12:44:43 PM	0:17:40	A	2	2600	1972
2009-230	5002	11/14/2009 12:35:27 PM	11/14/2009 12:38:41 PM	0:03:14	B	1	2310	1980
2009-230	3313	11/14/2009 12:35:25 PM	11/14/2009 12:39:02 PM	0:03:37	B	1	3930	1396
2009-230	3122	11/14/2009 12:35:24 PM	11/14/2009 12:39:30 PM	0:04:06	B	1	2330	300
2009-230	3121	11/14/2009 12:35:24 PM	11/14/2009 12:39:50 PM	0:04:26	B	1	2760	650
2009-230	2312	11/14/2009 12:35:25 PM	11/14/2009 12:40:19 PM	0:04:54	B	1	2260	754
2009-230	3127	11/14/2009 12:35:24 PM	11/14/2009 12:40:50 PM	0:05:26	B	1	4010	1569
2009-230	3123	11/14/2009 12:35:24 PM	11/14/2009 12:41:36 PM	0:06:12	B	1	1220	1187
2009-230	2132	11/14/2009 12:35:28 PM	11/14/2009 12:41:50 PM	0:06:22	B	1	940	718
2009-231	2132	11/14/2009 12:44:25 PM	11/14/2009 12:46:49 PM	0:02:24	C	2	670	718
2009-231	2132	11/14/2009 12:35:28 PM	11/14/2009 12:41:51 PM	0:06:23	C	2	320	718
2009-233	3127	11/14/2009 12:44:45 PM	11/14/2009 12:47:31 PM	0:02:46	C	2	3430	1569
2009-236	5714	11/14/2009 12:57:34 PM	11/14/2009 1:04:54 PM	0:07:20	A	2	0	0
2009-236	5735	11/14/2009 12:57:33 PM	11/14/2009 1:28:23 PM	0:30:50	A	2	0	0
2009-236	2134	11/14/2009 12:57:34 PM	11/14/2009 1:52:15 PM	0:54:41	A	2	1660	1528
2009-236	2132	11/14/2009 12:57:34 PM	11/14/2009 1:53:01 PM	0:55:27	A	2	940	718
2009-236	2133	11/14/2009 12:57:34 PM	11/14/2009 1:53:15 PM	0:55:41	A	2	290	406
2009-237	3415	11/14/2009 3:25:00 PM	11/14/2009 7:00:00 PM	3:35:00	C	5	20	6
2009-238	5001	11/17/2009 2:10:14 PM	11/17/2009 2:14:14 PM	0:04:00	A	4	1050	876
2009-238	4124	11/17/2009 2:10:16 PM	11/17/2009 2:15:27 PM	0:05:11	A	4	2790	1926
2009-238	3412	11/17/2009 2:10:16 PM	11/17/2009 2:16:01 PM	0:05:45	A	4	1040	1004
2009-238	3413	11/17/2009 2:10:16 PM	11/17/2009 2:16:23 PM	0:06:07	A	4	290	2735
2009-238	3415	11/17/2009 2:10:16 PM	11/17/2009 2:16:51 PM	0:06:35	A	4	2160	1612

Exhibit 1
Attachment A

2009-238	2311	11/17/2009 2:10:14 PM	11/17/2009 2:18:36 PM	0:08:22	A	4	960	748
2009-238	2314	11/17/2009 2:10:14 PM	11/17/2009 2:19:22 PM	0:09:08	A	4	1290	768
2009-238	2133	11/17/2009 2:10:15 PM	11/17/2009 2:20:05 PM	0:09:50	A	4	200	406
2009-238	4122	11/17/2009 2:10:16 PM	11/17/2009 2:23:37 PM	0:13:21	A	4	2340	1972
2009-238	3123	11/17/2009 2:07:22 PM	11/17/2009 2:20:44 PM	0:13:22	A	4	1620	1187
2009-238	2132	11/17/2009 2:07:23 PM	11/17/2009 2:22:01 PM	0:14:38	A	4	890	718
2009-238	1432	11/17/2009 2:10:12 PM	11/17/2009 2:25:13 PM	0:15:01	A	4	160	300
2009-238	2134	11/17/2009 2:07:23 PM	11/17/2009 2:25:40 PM	0:18:17	A	4	1290	1528
2009-238	3411	11/17/2009 2:10:16 PM	11/17/2009 2:31:57 PM	0:21:41	A	4	2940	300
2009-238	3414	11/17/2009 2:10:16 PM	11/17/2009 2:32:57 PM	0:22:41	A	4	3130	859
2009-238	3314	11/17/2009 2:10:13 PM	11/17/2009 2:32:57 PM	0:22:44	A	4	480	552
2009-238	5002	11/17/2009 2:07:21 PM	11/17/2009 2:30:19 PM	0:22:58	A	4	2100	1980
2009-238	3313	11/17/2009 2:07:22 PM	11/17/2009 2:34:39 PM	0:27:17	A	4	3490	1396
2009-238	2312	11/17/2009 2:07:25 PM	11/17/2009 2:37:43 PM	0:30:18	A	4	2180	754
2009-238	5706	11/17/2009 2:07:21 PM	11/17/2009 2:42:57 PM	0:35:36	A	4	0	0
2009-238	5702	11/17/2009 2:07:21 PM	11/17/2009 2:43:23 PM	0:36:02	A	4	0	0
2009-238	3121	11/17/2009 2:07:22 PM	11/17/2009 2:44:14 PM	0:36:52	A	4	2810	650
2009-238	3122	11/17/2009 2:07:22 PM	11/17/2009 2:46:35 PM	0:39:13	A	4	3120	300
2009-238	3127	11/17/2009 2:07:22 PM	11/17/2009 2:47:55 PM	0:40:33	A	4	4550	1569
2009-239	5001	11/20/2009 10:05:52 AM	11/20/2009 10:07:33 AM	0:01:41	B	1	1430	876
2009-239	2314	11/20/2009 10:05:52 AM	11/20/2009 10:09:09 AM	0:03:17	B	1	1350	768
2009-239	3122	11/20/2009 10:05:54 AM	11/20/2009 10:10:06 AM	0:04:12	B	1	2990	300
2009-239	2311	11/20/2009 10:05:52 AM	11/20/2009 10:10:37 AM	0:04:45	B	1	1250	748
2009-240	3415	11/21/2009 11:20:00 AM	11/21/2009 1:15:00 PM	1:55:00	C	6	75	25
2009-241	2134	11/22/2009 7:27:39 AM	11/22/2009 1:30:00 PM	6:02:21	C	6	45	15
2009-242	5001	11/22/2009 10:12:31 AM	11/22/2009 10:16:54 AM	0:04:23	B	1	1260	876
2009-242	3122	11/22/2009 10:12:32 AM	11/22/2009 10:17:57 AM	0:05:25	B	1	2390	300
2009-242	2314	11/22/2009 10:12:30 AM	11/22/2009 10:18:25 AM	0:05:55	B	1	1310	768
2009-242	2311	11/22/2009 10:12:30 AM	11/22/2009 10:19:12 AM	0:06:42	B	1	1340	748
2009-243	5001	11/24/2009 10:12:33 AM	11/24/2009 10:14:14 AM	0:01:41	B	1	1440	876
2009-243	2314	11/24/2009 10:12:34 AM	11/24/2009 10:15:09 AM	0:02:35	B	1	1330	768
2009-243	3122	11/24/2009 10:12:34 AM	11/24/2009 10:20:17 AM	0:07:43	B	1	3130	300
2009-243	2311	11/24/2009 10:12:34 AM	11/24/2009 10:21:05 AM	0:08:31	B	1	1210	748
2009-244	5001	11/25/2009 10:59:48 AM	11/25/2009 11:01:20 AM	0:01:32	B	1	1070	876
2009-244	2314	11/25/2009 10:59:47 AM	11/25/2009 11:01:47 AM	0:02:00	B	1	1500	768
2009-244	2311	11/25/2009 10:59:47 AM	11/25/2009 11:02:47 AM	0:03:00	B	1	1360	748
2009-244	3122	11/25/2009 10:59:52 AM	11/25/2009 11:03:43 AM	0:03:51	B	1	2950	300
2009-245	4002	11/26/2009 8:30:00 AM	11/26/2009 3:00:00 PM	6:30:00	C	2	300	100
2009-246	2133	11/27/2009 11:20:00 AM	11/27/2009 1:00:00 PM	1:40:00	C	5	30	10
2009-247	3415	11/29/2009 4:33:01 PM	11/29/2009 5:45:00 PM	1:11:59	C	6	30	10
2009-248	3415	11/29/2009 7:16:00 PM	11/29/2009 10:30:00 PM	3:14:00	C	5	150	50
2009-249	2312	11/29/2009 7:17:27 PM	11/29/2009 7:49:07 PM	0:31:40	C	2	2310	754
2009-249	2312	11/29/2009 7:16:18 PM	11/29/2009 8:00:00 PM	0:43:42	C	2	850	280
2009-249	2312	11/29/2009 7:16:18 PM	11/29/2009 8:35:00 PM	1:18:42	C	2	1340	450
2009-250	3127	11/30/2009 11:25:10 AM	11/30/2009 2:00:00 PM	2:34:50	C	6	9	3
2009-251	3121	12/1/2009 9:11:42 PM	12/1/2009 9:13:11 PM	0:01:29	B	1	2830	650
2009-251	2134	12/1/2009 9:11:47 PM	12/1/2009 9:15:13 PM	0:03:26	B	1	1750	1528
2009-251	2312	12/1/2009 9:11:46 PM	12/1/2009 9:21:14 PM	0:09:28	B	1	2030	754
2009-252	1323	12/2/2009 3:00:00 PM	12/2/2009 5:30:00 PM	2:30:00	C	5	3	1
2009-253	3415	12/3/2009 2:00:04 PM	12/3/2009 4:30:00 PM	2:29:56	C	6	3	1
2009-254	4002	12/3/2009 11:35:00 PM	12/4/2009 4:30:00 AM	4:55:00	C	6	450	150
2009-255	2134	12/13/2009 7:25:00 PM	12/13/2009 9:30:00 PM	2:05:00	C	5	30	10

Exhibit 1
Attachment A

2009-257	5002	12/17/2009 4:00:00 PM	12/17/2009 6:00:00 PM	2:00:00	C	5	6	2
2009-258	2132	12/17/2009 8:40:00 PM	12/18/2009 12:30:00 AM	3:50:00	C	6	30	10
2009-259	4122	12/23/2009 6:14:32 AM	12/23/2009 9:30:00 AM	3:15:28	C	6	3	1
2009-260	3415	12/23/2009 6:25:00 AM	12/23/2009 8:00:00 AM	1:35:00	C	5	30	10
2009-261	3127	12/23/2009 7:50:00 PM	12/24/2009 1:00:00 AM	5:10:00	C	5	24	8
2009-262	1323	12/27/2009 2:55:00 PM	12/27/2009 7:00:00 PM	4:05:00	C	5	72	24
2009-264	5766	12/29/2009 6:08:28 PM	12/29/2009 7:52:31 PM	1:44:03	C	5	0	0
2009-264	1432	12/29/2009 6:08:28 PM	12/29/2009 8:53:21 PM	2:44:53	C	5	350	300
2009-264	5702	12/29/2009 6:08:25 PM	12/29/2009 10:00:00 PM	3:51:35	C	5	0	0
2009-265	2133	12/31/2009 11:27:10 AM	12/31/2009 2:00:00 PM	2:32:50	C	6	20	5
2009-267	3123	12/31/2009 2:19:38 PM	12/31/2009 3:30:00 PM	1:10:22	C	6	9	3
2009-268	2133	12/31/2009 7:10:00 PM	12/31/2009 9:30:00 PM	2:20:00	C	5	15	5