



GFile  
C: BC  
SJI  
SKD  
WT

PUBLIC UTILITIES  
COMMISSION

2009 MAR 30 A 11:44

FILED

March 26, 2009

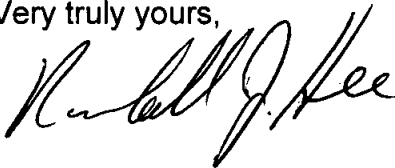
The Honorable Chairman and Members of the  
Hawaii Public Utilities Commission  
Kekuanaoa Building, First Floor  
465 South King Street  
Honolulu, HI 96813

Subject: KIUC 2008 Annual Service Reliability Report

Dear Ms. Kane:

Attached for the Commission's information is a copy of KIUC's 2008 Annual Service Reliability Report. If you have any questions regarding the attached report please contact Tim Blume at (808) 246-8274.

Very truly yours,



Randall J. Hee, P.E.  
President & Chief Executive Officer

Enclosures

cc: PUC Assistant Nate Kawakami  
Catherine Awakuni, Consumer Advocate

*The power of human connections.*

4463 Pahe`e Street, Suite 1 • Lihue, Kaua`i, HI 96766-2000 • (808)246-4300 • [www.kiuc.coop](http://www.kiuc.coop)

KIUC is an equal opportunity provider and employer.



**ANNUAL SERVICE RELIABILITY REPORT**

**2008**

Prepared  
March 25, 2009

## CONTENTS

|                                    |              |
|------------------------------------|--------------|
| Introduction.....                  | 3            |
| Definition of Terms.....           | 4            |
| Reliability Indices.....           | 6            |
| Sustained Interruption Causes..... | 9            |
| Interruption List.....             | Attachment A |

## INTRODUCTION

This is the 2008 Annual Service Reliability Report ("Report") of the Kaua'i Island Utility Cooperative ("KIUC"). The Report contains a five-year history of standard industry reliability indices in order to depict the quality of electrical service provided to the cooperative consumer/member. These reliability indices are calculated using the data from all sustained (i.e. one minute or longer) system interruptions.

If data normalization is required, it is done using the guidelines specified in the report entitled, "Methodology for Determining Reliability Indices for HECO Utilities," dated December 1990. That report indicates that normalization is allowed for "abnormal" situations such as hurricane, tsunami, earthquake, flood, catastrophic equipment failure, and single outages that cascade into a loss of load greater than 10% of the system peak. Such normalizations are made because good engineering design – while accounting for safety, reliability, utility industry standards, and economics – cannot and should not always account for catastrophic events.

The Report also contains a detailed breakdown of interruption causes, which is used to determine steps to be taken to prevent recurrence of such interruptions.

## DEFINITION OF TERMS

### CUSTOMER INTERRUPTION

One interruption of one customer. Interruptions to customers at their request (e.g. customer maintenance) are not considered.

### INTERRUPTION

The loss of service to one or more consumers and is a result of one or more component outages.

### INTERRUPTION DURATION

The period from the initiation of an interruption to a consumer until service has been restored to that consumer.

### MOMENTARY INTERRUPTION

An interruption that has duration limited to the period required to restore service by automatic or supervisory-controlled switching operations or by manual switching at locations where an operator is immediately available. Such switching operations must be completed in a specific time not to exceed one minute.

### SUSTAINED INTERRUPTION

Any interruption not classified as a momentary interruption (i.e. greater than one minute in duration). Only this type of interruption is included in the reliability indices within this report.

### RELIABILITY INDICES

Measurements used to indicate electrical service reliability. The indices used in this report conform to Institute of Electrical and Electronics Engineers (IEEE) standards. Four indices that convey a meaningful representation of the level of reliability were selected and are presented in this report. These reliability indices are as follows:

#### 1. AVERAGE SERVICE AVAILABILITY (ASA)

Total customer hours actually served as a percentage of total customer hours possible during the year. This indicates the extent to which electrical service was available to all customers. This index has been commonly referred to as the "Index of Reliability."

#### 2. CUSTOMER AVERAGE INTERRUPTION DURATION INDEX (CAIDI)

The interruption duration per customer interrupted during the year. This index indicates the average duration of an interruption for those customers affected by a sustained interruption.

**3. SYSTEM AVERAGE INTERRUPTION DURATION INDEX (SAIDI)**

The interruption duration per customer served during the year. This index indicates the average interruption time experienced by all customers serviced on the system.

**4. SYSTEM AVERAGE INTERRUPTION FREQUENCY INDEX (SAIFI)**

The number of customer interruptions per customer served during the year. This index indicates the average number of sustained interruptions experienced by all customers serviced on the system.

The reliability indices are related to each other in a few ways. For example, the product of CAIDI and SAIFI is SAIDI. SAIDI can then be used to find ASA, since SAIDI represents the time during a period without service, while ASA represents the percent of time during that same period with service. The reliability indices can be thought of more simply as:

1. The percent of time electrical service is available (ASA)
2. The amount of time electrical service is NOT available (SAIDI)
3. How long an interruption lasts (CAIDI)
4. How often an interruption occurs (SAIFI)

**Table 1: 2004 – 2008 KIUC RELIABILITY INDICES**

|                 | <b>2004</b> | <b>2005</b> | <b>2006</b> | <b>2007</b> | <b>2008</b> |
|-----------------|-------------|-------------|-------------|-------------|-------------|
| System Peak, MW | 76.99       | 76.18       | 76.78       | 77.75       | 74.27       |
| Customers, #    | 33,232      | 33,772      | 34,671      | 35,207      | 35,679      |
| ASA, %          | 99.965      | 99.976      | 99.969      | 99.961      | 99.983      |
| SAIFI, #        | 6.98        | 4.89        | 8.17        | 8.43        | 4.45        |
| CAIDI, minutes  | 26.26       | 25.63       | 20.16       | 24.35       | 19.84       |
| SAIDI, minutes  | 183.29      | 125.33      | 164.70      | 205.15      | 88.27       |

**Notes:**

None of the above data has been normalized.

**Fig. 1: ASA (higher is better)**

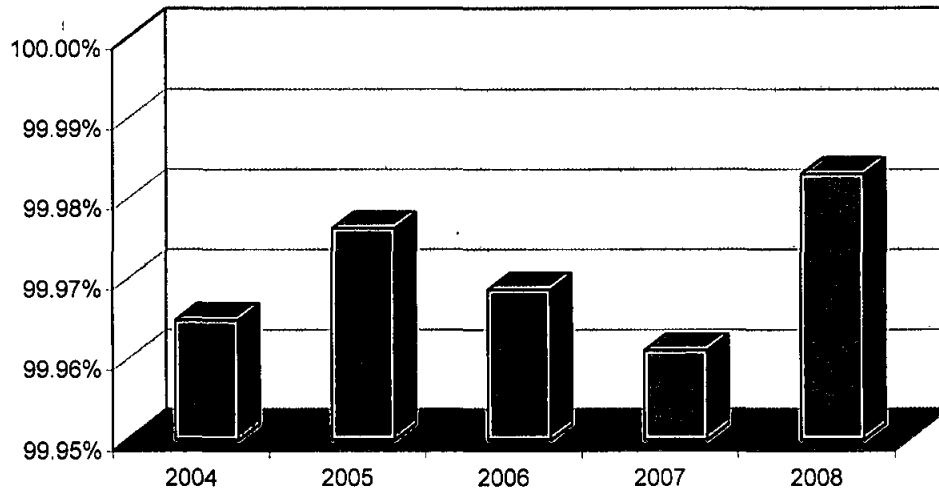


Figure 1 shows the Average System Availability (ASA) for the past five years. The 2008 ASA of 99.983% was the best of the five-year period and better than the five-year average of 99.971%.

**Fig. 2: SAIFI (lower is better)**

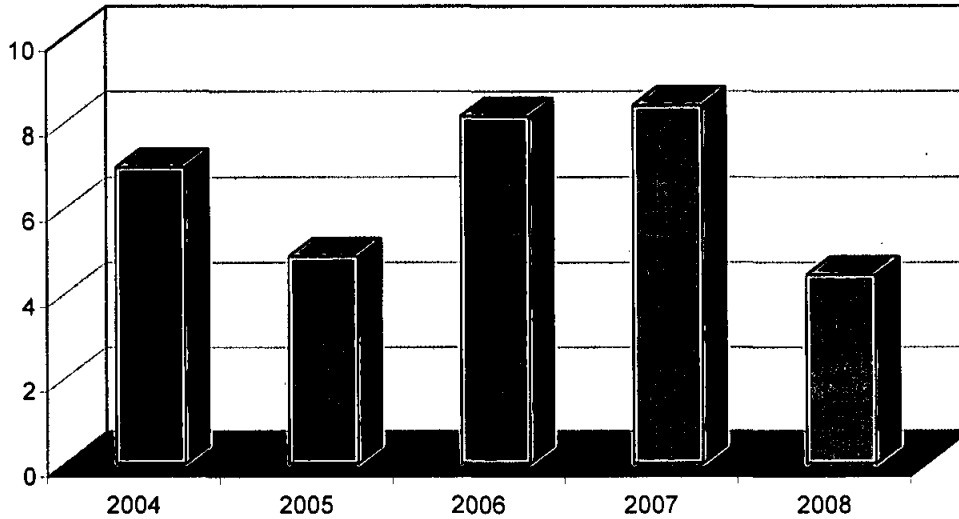


Figure 2 shows the System Average Interruption Frequency Index (SAIFI) for the past five years. The 2008 SAIFI of 4.45 was the best of the five-year period and better than the five-year average of 6.58.



Fig. 3: CAIDI (lower is better)

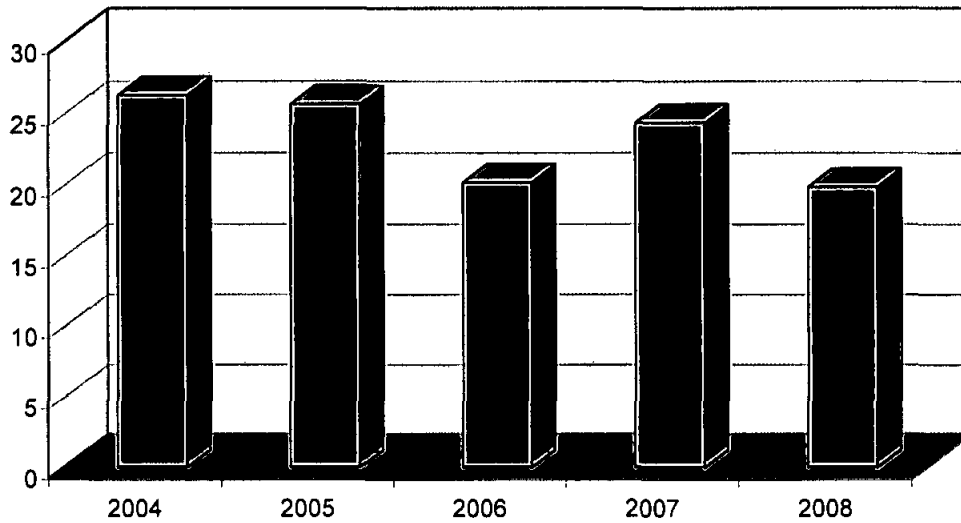


Figure 3 shows the Customer Average Interruption Duration Index (CAIDI) for the past five years. The 2008 CAIDI of 19.84 was best of the five-year period and better than the five-year average of 23.25.

Fig. 4: SAIDI (lower is better)

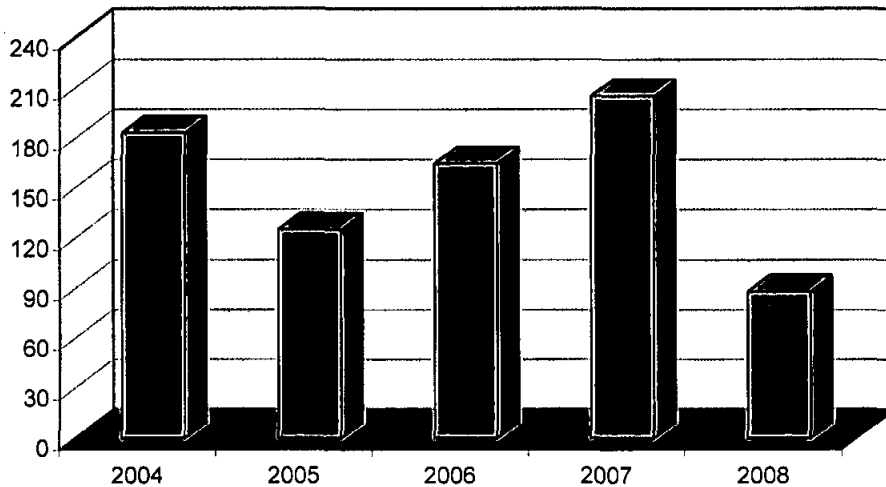


Figure 4 shows the System Average Interruption Duration Index (SAIDI) for the past five years. The 2008 SAIDI of 88.27 was the best of the five-year period and better than the five-year average of 153.35.

## 2008 KIUC SUSTAINED INTERRUPTION CAUSES

In the following figures and tables, the most recent years' sustained interruption causes are examined. Interruptions can be broken down many ways, but we will focus on two areas: causes by frequency (what caused the most interruptions), and causes by magnitude (what caused the most severe interruptions).

**Fig. 5: Sustained Interruptions by Frequency**

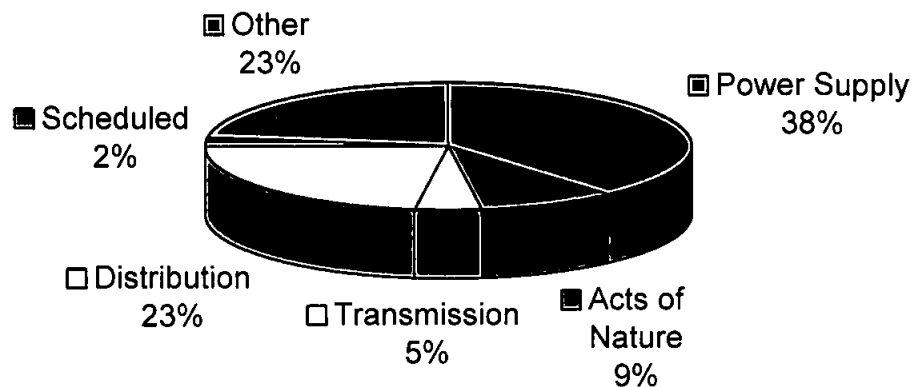


Figure 5 shows the breakdown by frequency. The cause of most interruptions was loss of Power Supply confined within KIUC, examples of which are generating unit problems that result in a reduction of output, causing an under frequency load shed. Causes of the second most interruptions was Distribution: failure or malfunction of distribution equipment including cables, fuses, insulators, poles, and transformers; and Other: persons or equipment not related to or owned by KIUC. Examples of Other interruption causes include auto accidents that contact utility poles or wires, non-KIUC contractors such as construction crews that dig into underground cables or tree trimmers that contact overhead wires, and trees that contact wires due to overgrowth. The cause of the third most interruptions was Acts of Nature: high winds, floods, storms, etc. For KIUC, acts of nature typically involve high winds causing debris such as trees to contact or topple wires. The cause of the fourth most interruptions was Transmission: failure or malfunction of transmission equipment owned by KIUC. Examples of transmission equipment include insulators, large transformers, lightning arrestors, and switches. The cause of the fifth most, or least, interruptions was Scheduled: prearranged outages to conduct repairs to transmission or distribution circuits.

**Fig. 6: Sustained Interruptions by Magnitude**

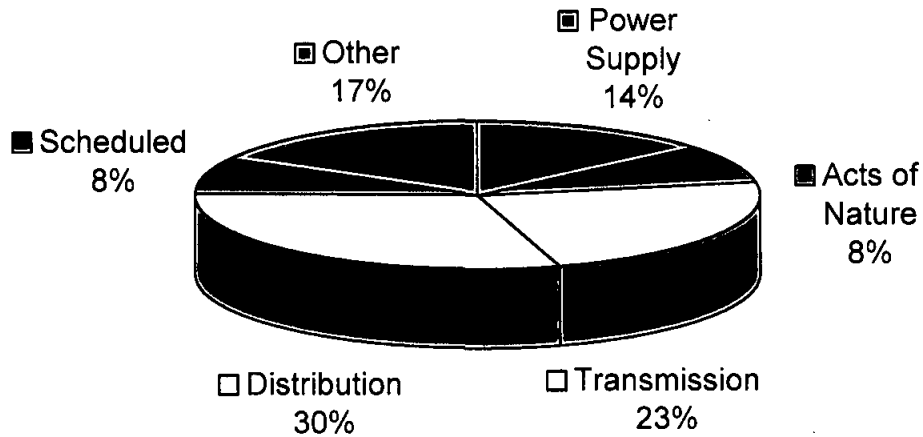


Figure 6 shows the breakdown by magnitude. The same descriptions and examples that were described following Figure 5 apply also for Figure 6. The cause of the most severe interruptions was Distribution, followed by Transmission, followed by Other, followed by Power Supply, followed equally by Acts of Nature and Scheduled.

Exhibit 1  
Attachment A

| Interruption.# | Circuit | Outage Start Time | Outage End Time  | Duration | Class | Type | kW   | # of Consumers |
|----------------|---------|-------------------|------------------|----------|-------|------|------|----------------|
| 2008-4         | 2312    | 1/4/08 3:03 PM    | 1/4/08 3:20 PM   | 0:17:23  | B     | 6    | 2530 | 754            |
| 2008-12        | 3411    | 1/26/08 8:09 AM   | 1/26/08 8:32 AM  | 0:22:28  | B     | 6    | 790  | 300            |
| 2008-18        | 4121    | 2/3/08 1:16 PM    | 2/3/08 1:51 PM   | 0:35:06  | A     | 2    | 810  | 430            |
| 2008-18        | 4122    | 2/3/08 1:16 PM    | 2/3/08 1:49 PM   | 0:32:15  | A     | 2    | 2890 | 1972           |
| 2008-18        | 4123    | 2/3/08 1:16 PM    | 2/3/08 1:51 PM   | 0:34:25  | A     | 2    | 1020 | 225            |
| 2008-18        | 4124    | 2/3/08 1:16 PM    | 2/3/08 1:42 PM   | 0:25:40  | A     | 2    | 3770 | 1926           |
| 2008-18        | 4124    | 2/3/08 1:43 PM    | 2/3/08 1:45 PM   | 0:01:59  | A     | 2    | 4140 | 1926           |
| 2008-19        | 3411    | 2/3/08 10:58 PM   | 2/4/08 12:26 AM  | 1:28:07  | A     | 4    | 660  | 300            |
| 2008-19        | 3412    | 2/3/08 10:58 PM   | 2/4/08 12:27 AM  | 1:28:50  | A     | 4    | 930  | 1004           |
| 2008-19        | 3413    | 2/3/08 10:58 PM   | 2/4/08 12:29 AM  | 1:30:23  | A     | 4    | 2010 | 2735           |
| 2008-19        | 3414    | 2/3/08 10:58 PM   | 2/4/08 12:31 AM  | 1:32:58  | A     | 4    | 1570 | 859            |
| 2008-19        | 3415    | 2/3/08 10:58 PM   | 2/4/08 12:32 AM  | 1:33:49  | A     | 4    | 1160 | 1612           |
| 2008-19        | 4121    | 2/3/08 10:58 PM   | 2/4/08 12:47 AM  | 1:48:52  | A     | 4    | 530  | 430            |
| 2008-19        | 4122    | 2/3/08 10:58 PM   | 2/4/08 12:42 AM  | 1:43:30  | A     | 4    | 1760 | 1972           |
| 2008-19        | 4123    | 2/3/08 10:58 PM   | 2/4/08 12:45 AM  | 1:46:55  | A     | 4    | 660  | 225            |
| 2008-19        | 4124    | 2/3/08 10:58 PM   | 2/4/08 12:38 AM  | 1:40:00  | A     | 4    | 2650 | 1926           |
| 2008-21        | 3121    | 2/4/08 12:38 AM   | 2/4/08 12:40 AM  | 0:01:42  | B     | 1    | 1640 | 650            |
| 2008-21        | 2132    | 2/4/08 12:38 AM   | 2/4/08 12:41 AM  | 0:02:28  | B     | 1    | 430  | 718            |
| 2008-21        | 2133    | 2/4/08 12:38 AM   | 2/4/08 12:41 AM  | 0:02:09  | B     | 1    | 170  | 406            |
| 2008-21        | 5002    | 2/4/08 12:38 AM   | 2/4/08 12:39 AM  | 0:00:34  | B     | 1    | 810  | 1980           |
| 2008-30        | 3121    | 2/27/08 7:43 AM   | 2/27/08 8:20 AM  | 0:36:53  | C     | 6    | 2540 | 650            |
| 2008-32        | 3121    | 2/27/08 8:25 AM   | 2/27/08 8:31 AM  | 0:06:17  | B     | 1    | 2700 | 650            |
| 2008-32        | 5002    | 2/27/08 8:25 AM   | 2/27/08 8:30 AM  | 0:05:28  | B     | 1    | 1400 | 1980           |
| 2008-32        | 2132    | 2/27/08 8:25 AM   | 2/27/08 8:32 AM  | 0:07:24  | B     | 1    | 690  | 718            |
| 2008-32        | 2133    | 2/27/08 8:25 AM   | 2/27/08 8:32 AM  | 0:07:08  | B     | 1    | 260  | 406            |
| 2008-50        | 3411    | 3/19/08 8:29 AM   | 3/19/08 8:37 AM  | 0:08:22  | C     | 5    | 3140 | 300            |
| 2008-64        | 1231    | 4/17/08 3:00 AM   | 4/17/08 3:07 AM  | 0:06:31  | A     | 2    | 770  | 10             |
| 2008-64        | 1232    | 4/17/08 3:00 AM   | 4/17/08 4:59 AM  | 1:58:39  | A     | 2    | 230  | 10             |
| 2008-64        | 1233    | 4/17/08 3:00 AM   | 4/17/08 3:07 AM  | 0:07:03  | A     | 2    | 420  | 30             |
| 2008-69        | 3122    | 4/25/08 9:42 PM   | 4/26/08 12:26 AM | 2:44:00  | C     | 6    | 1170 | 300            |
| 2008-71        | 3121    | 4/26/08 2:10 AM   | 4/26/08 4:53 AM  | 2:42:21  | C     | 6    | 1540 | 650            |
| 2008-74        | 2134    | 4/30/08 11:46 AM  | 4/30/08 12:14 PM | 0:27:57  | C     | 6    | 2100 | 1528           |
| 2008-78        | 4002    | 5/6/08 2:48 PM    | 5/6/08 3:04 PM   | 0:16:13  | A     | 6    | 380  | 471            |
| 2008-78        | 4121    | 5/6/08 2:48 PM    | 5/6/08 3:12 PM   | 0:23:57  | A     | 6    | 940  | 430            |
| 2008-78        | 4122    | 5/6/08 2:48 PM    | 5/6/08 3:08 PM   | 0:19:20  | A     | 6    | 2330 | 1972           |
| 2008-78        | 4123    | 5/6/08 2:48 PM    | 5/6/08 3:07 PM   | 0:18:32  | A     | 6    | 1020 | 225            |
| 2008-78        | 4124    | 5/6/08 2:48 PM    | 5/6/08 3:05 PM   | 0:16:46  | A     | 6    | 3700 | 1926           |
| 2008-86        | 1322    | 5/21/08 2:24 PM   | 5/21/08 2:38 PM  | 0:14:11  | C     | 6    | 940  | 700            |
| 2008-87        | 1322    | 5/21/08 3:51 PM   | 5/21/08 3:57 PM  | 0:06:41  | C     | 6    | 940  | 700            |
| 2008-87        | 1322    | 5/21/08 3:51 PM   | 5/21/08 5:00 PM  | 1:08:42  | C     | 6    | 10   | 3              |

Exhibit 1  
Attachment A

|          |      |                  |                  |         |   |   |      |      |
|----------|------|------------------|------------------|---------|---|---|------|------|
| 2008-107 | 3121 | 7/9/08 9:54 AM   | 7/9/08 9:57 AM   | 0:02:50 | C | 5 | 2620 | 650  |
| 2008-107 | 3121 | 7/9/08 9:54 AM   | 7/9/08 3:45 PM   | 5:50:07 | C | 5 | 60   | 20   |
| 2008-107 | 3121 | 7/9/08 12:36 PM  | 7/9/08 12:37 PM  | 0:01:12 | C | 5 | 3000 | 650  |
| 2008-109 | 3313 | 7/13/08 8:25 AM  | 7/13/08 11:15 AM | 2:49:45 | C | 5 | 960  | 320  |
| 2008-109 | 3313 | 7/13/08 10:02 AM | 7/13/08 10:05 AM | 0:02:16 | C | 5 | 2030 | 1396 |
| 2008-117 | 3123 | 7/23/08 12:44 PM | 7/23/08 1:16 PM  | 0:31:17 | B | 5 | 4400 | 766  |
| 2008-117 | 3127 | 7/23/08 12:44 PM | 7/23/08 1:28 PM  | 0:43:17 | B | 5 | 5230 | 1569 |
| 2008-122 | 1325 | 7/30/08 4:30 PM  | 7/30/08 4:35 PM  | 0:04:58 | C | 5 | 520  | 200  |
| 2008-123 | 3121 | 7/31/08 2:07 PM  | 7/31/08 2:11 PM  | 0:04:15 | B | 1 | 3090 | 650  |
| 2008-123 | 5002 | 7/31/08 2:07 PM  | 7/31/08 2:08 PM  | 0:01:43 | B | 1 | 1860 | 1980 |
| 2008-123 | 2132 | 7/31/08 2:07 PM  | 7/31/08 2:11 PM  | 0:04:47 | B | 1 | 630  | 718  |
| 2008-123 | 2133 | 7/31/08 2:07 PM  | 7/31/08 2:11 PM  | 0:04:42 | B | 1 | 220  | 406  |
| 2008-125 | 5002 | 8/3/08 10:35 AM  | 8/3/08 10:37 AM  | 0:02:14 | B | 1 | 1580 | 1980 |
| 2008-125 | 2132 | 8/3/08 10:35 AM  | 8/3/08 10:39 AM  | 0:04:10 | B | 1 | 840  | 718  |
| 2008-125 | 2133 | 8/3/08 10:35 AM  | 8/3/08 10:38 AM  | 0:03:41 | B | 1 | 300  | 406  |
| 2008-125 | 3121 | 8/3/08 10:35 AM  | 8/3/08 10:38 AM  | 0:03:02 | B | 1 | 2340 | 650  |
| 2008-126 | 3121 | 8/3/08 11:36 AM  | 8/3/08 11:38 AM  | 0:02:18 | B | 1 | 2190 | 650  |
| 2008-126 | 2132 | 8/3/08 11:36 AM  | 8/3/08 11:48 AM  | 0:12:00 | B | 1 | 630  | 718  |
| 2008-126 | 2133 | 8/3/08 11:36 AM  | 8/3/08 11:47 AM  | 0:11:13 | B | 1 | 320  | 406  |
| 2008-126 | 5002 | 8/3/08 11:36 AM  | 8/3/08 11:37 AM  | 0:01:25 | B | 1 | 2020 | 1980 |
| 2008-126 | 5002 | 8/3/08 11:39 AM  | 8/3/08 11:39 AM  | 0:00:43 | B | 1 | 1940 | 1980 |
| 2008-126 | 3121 | 8/3/08 11:39 AM  | 8/3/08 11:43 AM  | 0:04:18 | B | 1 | 1850 | 650  |
| 2008-134 | 4124 | 8/13/08 6:02 PM  | 8/13/08 6:02 PM  | 0:00:13 | C | 5 | 4760 | 1926 |
| 2008-134 | 4124 | 8/13/08 6:03 PM  | 8/13/08 6:48 PM  | 0:45:21 | B | 5 | 3490 | 1926 |
| 2008-134 | 4124 | 8/13/08 6:03 PM  | 8/13/08 7:24 PM  | 1:20:43 | B | 5 | 2860 | 1926 |
| 2008-134 | 4124 | 8/13/08 6:49 PM  | 8/13/08 6:52 PM  | 0:02:31 | B | 5 | 630  | 1926 |
| 2008-134 | 4124 | 8/13/08 7:15 PM  | 8/13/08 7:15 PM  | 0:00:23 | B | 5 | 630  | 1926 |
| 2008-134 | 4124 | 8/13/08 7:28 PM  | 8/13/08 8:54 PM  | 1:26:00 | B | 5 | 2860 | 1926 |
| 2008-142 | 1432 | 9/3/08 8:22 AM   | 9/3/08 8:28 AM   | 0:06:18 | B | 1 | 230  | 300  |
| 2008-142 | 4122 | 9/3/08 8:22 AM   | 9/3/08 8:25 AM   | 0:03:05 | B | 1 | 2330 | 1972 |
| 2008-142 | 4123 | 9/3/08 8:22 AM   | 9/3/08 8:24 AM   | 0:02:09 | B | 1 | 830  | 225  |
| 2008-142 | 2311 | 9/3/08 8:22 AM   | 9/3/08 8:27 AM   | 0:05:41 | B | 1 | 1250 | 748  |
| 2008-142 | 3412 | 9/3/08 8:22 AM   | 9/3/08 8:26 AM   | 0:04:39 | B | 1 | 1130 | 1004 |
| 2008-143 | 3412 | 9/4/08 10:48 AM  | 9/4/08 10:50 AM  | 0:02:19 | B | 1 | 1080 | 1004 |
| 2008-143 | 1432 | 9/4/08 10:48 AM  | 9/4/08 10:51 AM  | 0:03:22 | B | 1 | 210  | 300  |
| 2008-143 | 4122 | 9/4/08 10:48 AM  | 9/4/08 10:52 AM  | 0:04:24 | B | 1 | 2570 | 1972 |
| 2008-143 | 4123 | 9/4/08 10:48 AM  | 9/4/08 10:50 AM  | 0:01:55 | B | 1 | 870  | 225  |
| 2008-144 | 2311 | 9/5/08 10:01 AM  | 9/5/08 10:20 AM  | 0:18:49 | C | 6 | 1180 | 748  |
| 2008-145 | 2311 | 9/5/08 7:23 PM   | 9/5/08 7:46 PM   | 0:22:12 | B | 1 | 1320 | 748  |
| 2008-145 | 2312 | 9/5/08 7:23 PM   | 9/5/08 7:36 PM   | 0:12:22 | B | 1 | 2270 | 754  |
| 2008-145 | 2314 | 9/5/08 7:23 PM   | 9/5/08 7:31 PM   | 0:07:46 | B | 1 | 1240 | 768  |

Exhibit 1  
Attachment A

|          |      |                   |                   |         |   |   |      |      |
|----------|------|-------------------|-------------------|---------|---|---|------|------|
| 2008-145 | 5001 | 9/5/08 7:23 PM    | 9/5/08 7:29 PM    | 0:05:30 | B | 1 | 1400 | 876  |
| 2008-145 | 3122 | 9/5/08 7:23 PM    | 9/5/08 7:32 PM    | 0:09:02 | B | 1 | 3280 | 300  |
| 2008-145 | 3314 | 9/5/08 7:23 PM    | 9/5/08 7:30 PM    | 0:06:42 | B | 1 | 250  | 552  |
| 2008-145 | 3412 | 9/5/08 7:23 PM    | 9/5/08 7:44 PM    | 0:20:58 | B | 1 | 1600 | 1004 |
| 2008-145 | 4121 | 9/5/08 7:23 PM    | 9/5/08 7:30 PM    | 0:06:25 | B | 1 | 890  | 430  |
| 2008-145 | 4122 | 9/5/08 7:23 PM    | 9/5/08 7:38 PM    | 0:15:00 | B | 1 | 2900 | 1972 |
| 2008-145 | 4123 | 9/5/08 7:23 PM    | 9/5/08 7:37 PM    | 0:13:16 | B | 1 | 980  | 225  |
| 2008-145 | 4124 | 9/5/08 7:23 PM    | 9/5/08 7:35 PM    | 0:11:10 | B | 1 | 4540 | 1926 |
| 2008-145 | 2133 | 9/5/08 7:23 PM    | 9/5/08 7:32 PM    | 0:08:13 | B | 1 | 350  | 406  |
| 2008-145 | 1322 | 9/5/08 7:23 PM    | 9/5/08 7:33 PM    | 0:10:01 | B | 1 | 860  | 700  |
| 2008-145 | 1432 | 9/5/08 7:23 PM    | 9/5/08 7:40 PM    | 0:16:14 | B | 1 | 300  | 300  |
| 2008-149 | 4121 | 9/11/08 9:04 AM   | 9/11/08 9:08 AM   | 0:04:19 | B | 4 | 710  | 430  |
| 2008-149 | 4122 | 9/11/08 9:04 AM   | 9/11/08 9:07 AM   | 0:03:10 | B | 4 | 2520 | 1972 |
| 2008-149 | 4123 | 9/11/08 9:04 AM   | 9/11/08 9:06 AM   | 0:02:25 | B | 4 | 810  | 225  |
| 2008-149 | 4124 | 9/11/08 9:04 AM   | 9/11/08 9:05 AM   | 0:01:25 | B | 4 | 3990 | 1926 |
| 2008-153 | 2312 | 9/18/08 12:14 PM  | 9/18/08 12:28 PM  | 0:13:06 | B | 1 | 2030 | 754  |
| 2008-153 | 2314 | 9/18/08 12:14 PM  | 9/18/08 12:21 PM  | 0:06:12 | B | 1 | 1320 | 768  |
| 2008-153 | 3314 | 9/18/08 12:14 PM  | 9/18/08 12:20 PM  | 0:05:04 | B | 1 | 560  | 552  |
| 2008-153 | 3413 | 9/18/08 12:14 PM  | 9/18/08 12:19 PM  | 0:04:20 | B | 1 | 430  | 2735 |
| 2008-153 | 5001 | 9/18/08 12:14 PM  | 9/18/08 12:22 PM  | 0:07:14 | B | 1 | 1440 | 876  |
| 2008-153 | 1432 | 9/18/08 12:15 PM  | 9/18/08 12:18 PM  | 0:03:35 | B | 1 | 220  | 300  |
| 2008-158 | 4121 | 9/24/08 9:25 AM   | 9/24/08 10:50 AM  | 1:24:35 | C | 5 | 780  | 430  |
| 2008-160 | 4121 | 9/25/08 1:34 AM   | 9/25/08 3:41 AM   | 2:07:13 | A | 3 | 410  | 430  |
| 2008-160 | 4123 | 9/25/08 1:34 AM   | 9/25/08 3:39 AM   | 2:05:07 | A | 3 | 480  | 225  |
| 2008-160 | 4124 | 9/25/08 1:35 AM   | 9/25/08 3:37 AM   | 2:02:18 | A | 3 | 2220 | 1926 |
| 2008-161 | 4122 | 9/25/08 4:39 AM   | 9/25/08 4:56 AM   | 0:16:23 | C | 5 | 1270 | 1972 |
| 2008-164 | 3122 | 9/26/08 3:08 PM   | 9/26/08 3:47 PM   | 0:38:06 | C | 5 | 3440 | 300  |
| 2008-164 | 3126 | 9/26/08 3:08 PM   | 9/26/08 6:30 PM   | 3:21:05 | C | 5 | 30   | 19   |
| 2008-165 | 3314 | 9/27/08 2:40 PM   | 9/27/08 2:46 PM   | 0:05:53 | B | 1 | 320  | 552  |
| 2008-165 | 5001 | 9/27/08 2:40 PM   | 9/27/08 2:45 PM   | 0:05:10 | B | 1 | 1340 | 876  |
| 2008-165 | 1432 | 9/27/08 2:40 PM   | 9/27/08 2:47 PM   | 0:06:35 | B | 1 | 240  | 300  |
| 2008-165 | 3413 | 9/27/08 2:40 PM   | 9/27/08 2:46 PM   | 0:05:30 | B | 1 | 450  | 2735 |
| 2008-165 | 2312 | 9/27/08 2:40 PM   | 9/27/08 2:50 PM   | 0:09:58 | B | 1 | 2140 | 754  |
| 2008-165 | 2314 | 9/27/08 2:40 PM   | 9/27/08 2:48 PM   | 0:07:31 | B | 1 | 1130 | 768  |
| 2008-172 | 1432 | 10/11/08 12:01 AM | 10/11/08 1:08 AM  | 1:06:45 | B | 1 | 190  | 300  |
| 2008-172 | 3314 | 10/11/08 12:01 AM | 10/11/08 12:05 AM | 0:04:29 | B | 1 | 250  | 552  |
| 2008-172 | 3413 | 10/11/08 12:01 AM | 10/11/08 12:05 AM | 0:04:09 | B | 1 | 340  | 2735 |
| 2008-172 | 5001 | 10/11/08 12:01 AM | 10/11/08 12:04 AM | 0:02:43 | B | 1 | 1270 | 876  |
| 2008-172 | 2312 | 10/11/08 12:01 AM | 10/11/08 12:08 AM | 0:06:49 | B | 1 | 1590 | 754  |
| 2008-172 | 2314 | 10/11/08 12:01 AM | 10/11/08 12:06 AM | 0:04:47 | B | 1 | 750  | 768  |
| 2008-173 | 5002 | 10/17/08 8:38 AM  | 10/17/08 8:43 AM  | 0:04:10 | B | 1 | 1040 | 1980 |

Exhibit 1  
Attachment A

|          |      |                  |                  |         |   |   |      |      |
|----------|------|------------------|------------------|---------|---|---|------|------|
| 2008-173 | 1322 | 10/17/08 8:39 AM | 10/17/08 8:45 AM | 0:06:36 | B | 1 | 220  | 700  |
| 2008-173 | 2132 | 10/17/08 8:39 AM | 10/17/08 8:45 AM | 0:06:26 | B | 1 | 650  | 718  |
| 2008-173 | 2134 | 10/17/08 8:39 AM | 10/17/08 8:44 AM | 0:05:45 | B | 1 | 1310 | 1528 |
| 2008-173 | 3123 | 10/17/08 8:39 AM | 10/17/08 8:44 AM | 0:05:05 | B | 1 | 1450 | 1187 |
| 2008-177 | 5002 | 10/18/08 3:48 PM | 10/18/08 3:49 PM | 0:01:13 | B | 1 | 1710 | 1980 |
| 2008-177 | 1322 | 10/18/08 3:48 PM | 10/18/08 3:51 PM | 0:03:04 | B | 1 | 590  | 700  |
| 2008-177 | 2132 | 10/18/08 3:48 PM | 10/18/08 3:50 PM | 0:02:14 | B | 1 | 670  | 718  |
| 2008-177 | 2134 | 10/18/08 3:48 PM | 10/18/08 3:52 PM | 0:04:27 | B | 1 | 1460 | 1528 |
| 2008-177 | 3123 | 10/18/08 3:48 PM | 10/18/08 3:51 PM | 0:03:50 | B | 1 | 1120 | 1187 |
| 2008-190 | 3123 | 11/7/08 1:03 PM  | 11/7/08 1:04 PM  | 0:01:25 | B | 1 | 1750 | 1187 |
| 2008-190 | 5002 | 11/7/08 1:03 PM  | 11/7/08 1:04 PM  | 0:00:58 | B | 1 | 2850 | 1980 |
| 2008-190 | 1322 | 11/7/08 1:03 PM  | 11/7/08 1:06 PM  | 0:02:59 | B | 1 | 690  | 700  |
| 2008-190 | 2132 | 11/7/08 1:03 PM  | 11/7/08 1:05 PM  | 0:02:28 | B | 1 | 590  | 718  |
| 2008-190 | 2134 | 11/7/08 1:03 PM  | 11/7/08 1:05 PM  | 0:02:03 | B | 1 | 1410 | 1528 |
| 2008-194 | 3123 | 11/11/08 9:35 PM | 11/11/08 9:39 PM | 0:04:22 | B | 1 | 920  | 1187 |
| 2008-194 | 1322 | 11/11/08 9:35 PM | 11/11/08 9:42 PM | 0:07:05 | B | 1 | 790  | 700  |
| 2008-194 | 2132 | 11/11/08 9:35 PM | 11/11/08 9:41 PM | 0:06:39 | B | 1 | 690  | 718  |
| 2008-194 | 2134 | 11/11/08 9:35 PM | 11/11/08 9:41 PM | 0:05:59 | B | 1 | 1580 | 1528 |
| 2008-194 | 5002 | 11/11/08 9:35 PM | 11/11/08 9:38 PM | 0:03:21 | B | 1 | 2440 | 1980 |
| 2008-219 | 2134 | 12/3/08 5:16 AM  | 12/3/08 7:00 AM  | 1:43:30 | C | 5 | 36   | 12   |
| 2008-219 | 2134 | 12/3/08 6:25 AM  | 12/3/08 6:27 AM  | 0:02:12 | C | 5 | 1490 | 1528 |
| 2008-221 | 3411 | 12/8/08 4:38 PM  | 12/8/08 4:45 PM  | 0:07:16 | B | 1 | 3190 | 300  |
| 2008-221 | 3413 | 12/8/08 4:38 PM  | 12/8/08 4:40 PM  | 0:01:49 | B | 1 | 310  | 2735 |
| 2008-221 | 3415 | 12/8/08 4:38 PM  | 12/8/08 4:43 PM  | 0:04:26 | B | 1 | 2270 | 1612 |
| 2008-225 | 2312 | 12/11/08 4:23 AM | 12/11/08 5:19 AM | 0:55:44 | C | 2 | 1460 | 754  |
| 2008-250 | 3411 | 12/25/08 9:38 PM | 12/25/08 9:42 PM | 0:03:40 | B | 1 | 3120 | 300  |
| 2008-250 | 3413 | 12/25/08 9:38 PM | 12/25/08 9:41 PM | 0:02:51 | B | 1 | 320  | 2735 |
| 2008-250 | 3415 | 12/25/08 9:38 PM | 12/25/08 9:39 PM | 0:01:13 | B | 1 | 2660 | 1612 |
| 2008-253 | 3411 | 12/27/08 4:33 PM | 12/27/08 4:39 PM | 0:06:09 | B | 1 | 3230 | 300  |
| 2008-253 | 3415 | 12/27/08 4:33 PM | 12/27/08 4:36 PM | 0:03:03 | B | 1 | 2540 | 1612 |
| 2008-258 | 4002 | 12/31/08 1:10 AM | 12/31/08 1:15 AM | 0:04:15 | A | 2 | 280  | 471  |
| 2008-258 | 4121 | 12/31/08 1:10 AM | 12/31/08 1:18 AM | 0:07:50 | A | 2 | 430  | 430  |
| 2008-258 | 4122 | 12/31/08 1:10 AM | 12/31/08 1:17 AM | 0:07:07 | A | 2 | 1430 | 1972 |
| 2008-258 | 4123 | 12/31/08 1:10 AM | 12/31/08 1:17 AM | 0:06:30 | A | 2 | 540  | 225  |
| 2008-258 | 4124 | 12/31/08 1:10 AM | 12/31/08 1:18 AM | 0:07:50 | A | 2 | 2140 | 1926 |